

# Conference Program

January 19-21, 2017

Hokkaido, Japan

ACENS

Asian Conference on Engineering and Natural  
Sciences

ICAS

International Conference on Applied Sciences

ISSSM

International Symposium on Social Sciences and  
Management

ICEEPS

International Conference on Education, Psychology  
and Society

**ACENS**

**Asian Conference on Engineering and Natural Sciences**

---

ISBN 978-986-5654-18-4

**ICAS**

**International Conference on Applied Sciences**

---

ISBN 978-986-5654-34-4

**ISSSM**

**International Symposium on Social Sciences and Management**

---

ISBN 978-986-5654-17-7

**ICEEPS**

**International Conference on Education, Psychology and Society**

---

ISBN 978-986-89298-9-0

## Content

---

Welcome Message .....	5
General Information for Participants .....	7
International Committees.....	9
International Committee of Nature Sciences .....	9
International Committee of Social Sciences .....	12
Conference Venue Information .....	17
Conference Schedule.....	19
Nature Sciences Keynote Speech .....	23
Social Sciences Keynote Speech .....	25
Oral Sessions.....	27
Electrical and Electronic Engineering (1) /Electronics .....	27
Social Studies (1).....	29
Education (1) .....	30
Industrial and Manufacturing Technologies / Materials Science and Engineering (1) .....	31
Chemical Engineering.....	33
Law .....	34
Business & Management (1).....	35
Education (2) .....	36
Finance & Accounting & Banking .....	37
Humanities and Culture Studies .....	38
Astronomy/ Aircraft and Flight/ Aeronautics & Aerospace Engineering/ Transportation.....	39
Computer Engineering and Technology(1) .....	40
Civil Engineering (1) .....	41
Mechanical Engineering and Technology (1).....	43
Communication / Art & Design .....	45
Business & Management (2).....	46
Education (3) .....	48
Electrical and Electronic Engineering (2) / Power & Energy Engineering .....	49
Biology/ Biotechnology/ Biological Engineering (1) .....	50
Social Studies (2)/ Society .....	51
Business & Management (3).....	52
Education (4) .....	54
Civil Engineering (2) .....	56
Engineering Technologies.....	58

<b>Social Studies (3)</b> .....	<b>59</b>
<b>Education (5)</b> .....	<b>60</b>
<b>Information Engineering and Technology (1) / Computer Engineering and Technology (2)</b> .....	<b>61</b>
<b>Environmental Engineering / Earth Sciences</b> .....	<b>63</b>
<b>Business &amp; Management (4)</b> .....	<b>65</b>
<b>Education (6)</b> .....	<b>66</b>
<b>Information Engineering and Technology (2) / Nanotechnology</b> .....	<b>67</b>
<b>Mechanical Engineering and Technology (2)/ Buildings and Construction</b> .....	<b>68</b>
<b>Psychology</b> .....	<b>69</b>
<b>Materials Science and Engineering (2)/ Materials</b> .....	<b>71</b>
<b>Biological Engineering</b> .....	<b>73</b>
<b>Poster Session (1)</b> .....	<b>74</b>
<b>Computer Engineering and Technology / Computer Technologies / Information Engineering and Technology / Engineering Technologies / Agricultural Engineering and Technologies / Nanotechnology / Ocean Technologies / Robotics / Electrical and Electronic Engineering (1)</b> .....	<b>74</b>
<b>Poster Session (2)</b> .....	<b>79</b>
<b>Education (1) / Society (1) / Social Studies</b> .....	<b>79</b>
<b>Poster Session (3)</b> .....	<b>84</b>
<b>Materials Science and Engineering (1) / Materials</b> .....	<b>84</b>
<b>Poster Session (4)</b> .....	<b>91</b>
<b>Business &amp; Management / Finance &amp; Accounting &amp; Banking / Education (2) / Literature and Linguistics</b> .....	<b>91</b>
<b>Poster Session (5)</b> .....	<b>96</b>
<b>Society (2)</b> .....	<b>96</b>
<b>Poster Session (6)</b> .....	<b>101</b>
<b>Mechanical Engineering and Technology / Industrial and Manufacturing Technologies / Physics / Environmental Engineering / Biological Engineering / Earth Sciences</b> .....	<b>101</b>
<b>Poster Session (7)</b> .....	<b>106</b>
<b>Biomedical Technologies / Biotechnology / Biology / Civil Engineering / Transportation / Aeronautics &amp; Aerospace Engineering</b> .....	<b>106</b>
<b>Poster Session (8)</b> .....	<b>110</b>
<b>Psychology / Communication / Chemistry / Chemical Engineering</b> .....	<b>110</b>
<b>Poster Session (9)</b> .....	<b>116</b>
<b>Electrical and Electronic Engineering (2) /Electronics / Radiation Protection and Dosimetry / Power &amp; Energy Engineering / Materials Science and Engineering (2) .....</b>	<b>116</b>

## ***Welcome Message***

---



### **Local Host**

#### **Kurt Ackermann**

Associate Professor  
English department Hokusei Gakuen University's Junior  
College Sapporo, Japan

Dear Conference Delegates,

As Hokkaido's first people the Ainu would say, "Irankarapte!"

Please accept a warm welcome to cool Hokkaido from me, Kurt Ackermann, and Higher Education Forum (HEF), the organizers of the 2017 Sapporo conferences.

As the transportation and financial hub of Hokkaido, Sapporo attracts a wide variety of visitors, coming for tourism or business. It has a well-established transportation infrastructure adapted to its unique winter situation, as well as a history of hosting large winter sports events, in particular the 1972 Winter Olympics. In fact, Sapporo will host the 8th Asian Winter Games soon after these conferences, from the 19th to the 26th of February 2017. This event is a prelude to the 23rd Olympic Winter Games, to be held in February 2018 in Pyeongchang in neighbouring South Korea.

Sapporo's winters, while often feeling cold to those from warmer climes, are actually quite mild by the standards of many cities that receive large amounts of snow.

The combination of plentiful snow, modern infrastructure, and (relatively!) mild temperatures makes the city and its environs a true winter playground. For visitors wishing to try their hand at some of these, there are free or reasonably-priced opportunities to try cross-country skiing (Nakajima Park), snowshoeing (Sapporo Art Park) and ice-skating. More ambitious visitors may even wish to try downhill skiing or snowboarding. In Sapporo, the possibilities for winter sports are almost limitless.

Although the image of northern winters is blustery and cold snowy days, there are actually many days when the crisp cold air is crowned with a brilliant clear blue sky and if you are at the observation deck of Sapporo's Mt. Moiwa you may experience beautiful vistas of the snow-blanketed city and its suburbs, with snow-covered mountains just to the south and also further to the north beyond the steel blue waters of Ishikari Bay. Just don't forget your gloves and hat!

As Hokkaido is famous throughout Japan for the quality of its seafood and wide variety of food in general, you can restore the energy you use on a chilly winter day with a hearty Hokkaido meal.

The core of Sapporo's transportation system is the subway, developed to coincide with its hosting of the 1972 Winter Olympics and which facilitates the movement of people during the snowy winters. Nevertheless, the recently extended streetcar line also continues to be an important component of the city's transit network. If you are lucky you may see the 'sasara densha' - a specially modified streetcar that sweeps the tram rails of new snow with its rotating bamboo brushes, starting at 4 a.m. every winter morning and then whenever it starts to snow.

Sapporo is a city developed with the input of people from all across Japan, who gathered in Hokkaido for various reasons. One of the things I like so much about Higher Education Forum organized conferences is the diversity, both of the fields represented in the presentations and of the participants themselves. It can be very refreshing to attend a presentation from another field to allow us to reconsider our perspectives and have the opportunity to be exposed to different ideas and ways of thinking. I strongly recommend all participants to attend at least one seemingly unrelated presentation, you might be surprised at what you learn and the new contacts that you make.

Enjoy this opportunity to both share your research and experience Hokkaido.

# General Information for Participants

---

## ■ Registration

The registration desk will be situated on the **1<sup>st</sup> Floor** at the **Sapporo Convention Center** during the following time:

**13:00-16:00 Thursday, January 19, 2017**

**08:30-16:00 Friday, January 20, 2017**

**08:30-14:00 Saturday, January 21, 2017**

## ■ Organizer



Higher Education Forum (HEF)

Tel: + 886 2 2740 1498 | [www.prohef.org](http://www.prohef.org)



## ■ A Polite Request to All Participants

Participants are requested to arrive in a timely fashion for all addresses. Presenters are reminded that the time slots should be divided fairly and equally by the number of presentations, and that they should not overrun. The session chair is asked to assume this timekeeping role and to summarize key issues in each topic.



## ■ Certificate

### Certificate of Presentation or Certificate of Attendance

A certificate of attendance includes participant's name and affiliation, certifying the participation in the conference. A certificate of presentation indicates a presenter's name, affiliation and the paper title that is presented in the scheduled session.

### Certificate Distribution

Oral presenters will receive a certificate of presentation from the session chair after their presentations or at the end of the session. Poster presenters will receive a certificate of presentation from the conference staff at the end of their poster session.

The certificate of presentation will not be issued, either at or after the conference, to authors whose papers are registered but not presented. Instead, the certificate of attendance will be provided after the conference.

**■ Preparation for Oral Presentations**

All presentation rooms are equipped with a screen, an LCD projector, and a laptop computer installed with Microsoft PowerPoint. You will be able to insert your USB flash drive into the computer and double check your file in PowerPoint. We recommend you to bring two copies of the file in case that one fails. You may also connect your own laptop to the provided projector; however please ensure you have the requisite connector.

**Preparation for Poster Presentation**

**Materials Provided by the Conference Organizer:**

1. X-frame display & base fabric canvases (60cm×160cm)
2. Adhesive tapes or binder clips

**Materials Prepared by the Presenters:**

3. Home-made poster(s)
4. Material: not limited, can be posted on the canvases
5. Recommended poster size: 60cm\*160cm



<p>A 60cm*160cm poster illustrates the research findings.</p>	<ol style="list-style-type: none"> <li>1. Wider than 60cm (left)</li> <li>2. Copy of PowerPoint slides in A4 papers (right)</li> </ol>



# International Committees

---

## International Committee of Nature Sciences

Abdelmalik Serbout	University of physical and sports activities Djelfa Algeria	Algeria
Abdelwahab Elghareeb	Cairo University	Egypt
Abhishek Shukla	R.D. Engineering College Technical Campus,Ghaziabad	India
Ahmad Zahedi	James Cook University	Australia
Alexander M. Korsunsky	Trinity College,Oxford	UK
Almacen	Philippine Association of Maritime Trainig Centers	Philippines
Amel L. Magallanes	Capiz State University	Philippines
Amran Bin Ahmed	University Malaysia Perlis	Malaysia
Anthony D. Johnson	Seoul National University of Science & Technology	UK
Ashley Love	A.T. Still University	USA
Asif Mahmood	King Saud University, Riyadh	Saudi Arabia
Asmida Ismail	University Technology Mara	Malaysia
Baolin Wang	University of Western Sydney	
Byoung-Jun Yoon	Korea National Open University	South Korea
Chang Ping-Chuan	Kun Shan University	Taiwan
Chee Fah Wong	Universiti Pendidikan Sultan Idris	Malaysia
Chee-Ming Chan	Universiti Tun Hussein Onn Malaysia	Malaysia
Cheng, Chun Hung	The Chinese University of Hong Kong	Hong Kong
Cheng-Min Feng	National Chiao Tung University	Taiwan
Cheuk-Ming Mak	The Hong Kong Polytechnic University	Hong Kong
Chia-Ray Lin	Academia Sinica	Taiwan
Chih-Wei Chiu	National Taiwan University of Science and Technology	Taiwan
Chikako Asada	Tokushima University	
Chi-Ming Lai	National Cheng-Kung University	Taiwan
Ching-An Peng	University of Idaho	USA
Chin-Tung Cheng	National Kaohsiung (First) University of Science and Technology	Taiwan
Christoph Lindenberger	Friedrich-Alexander University	Germany
Daniel W. M. Chan	The Hong Kong Polytechnic University	Hong Kong
Deok-Joo Lee	Kyung Hee University	South Korea
Din Yuen Chan	National Chiayi University	Taiwan
Don Liu	Louisiana University	USA
Edward J. Smaglik	Northen Arizona University	USA
Ehsan Noroozinejad	Kerman Graduate University of Advanced Technology (KGUT)	Iran

Farsangi		
Farhad Memarzadeh	National Institutes of Health	USA
Fariborz Rahimi	University of Bonab	Iran
Fatchiyah M.Kes.	Universitas Brawijaya	Indonesia
Gi-Hyun Hwang	Dongseo University	South Korea
Gwo-Jiun Horng	Southern Taiwan University of Science and Technology	Taiwan
Hae-Duck Joshua Jeong	Korean Bible University	South Korea
Hairul Azman Roslan	Universiti Malaysia Sarawak	
Hamed M El-Shora	Mansoura University	Egypt
Hanmin Jung	Convergence Technology Research Planning	South Korea
Hasmawi Bin Khalid	University Teknologi Mara	Malaysia
Hikyoo Koh	Lamar University	USA
Hiroshi Uechi	Osaka Gakuin University	Japan
Ho, Wing Kei Keith	The Hong Kong Institute of Education	Hong Kong
Hsiao-Rong Tyan	Chung Yuan Christian University	Taiwan
Hsien Hua Lee	National Sun Yat-Sen University	Taiwan
Hung-Yuan Chung	National Central University	Taiwan
Hyomin Jeong	Gyeongsang National University	South Korea
Hyoungeop Kim	Kyushu Insititute of Technogy	Japan
Jacky Yuh-Chung Hu	National Ilan University	Taiwan
Jeril Kuriakose	Manipal University	India
Jieh-Shian Young	National Changhua University of Education	Taiwan
Jivika Govil	Zion Bancorporation	India
Jongsuk Ruth Lee	Korea Institute of Science and Technology Information	South Korea
Jui-Hui Chen	CPC Corporation, Taiwan	Taiwan
Jung Tae Kim	Mokwon University	South Korea
Kamal Seyed Razavi	Federation University Australia	Australia
Kazuaki Maeda	Chubu Univeristy	Japan
Kim, Taesoo	Hanbat National University	South Korea
Kuang-Hui Peng	National Taipei University of Technology	Taiwan
Kun-Li Wen	Chienkuo Technology University	Taiwan
Lai Mun Kou	SEGi University	Malaysia
Lars Weinehall	Umea University	Sweden
Lee, Jae Bin	Mokpo National University	South Korea
M. Chandra Sekhar	National Institute of Technology	India
M. Krishnamurthy	KCG college of technology	India
Mane Aasheim Knudsen	University of Agder	Norway
Michiko Miyamoto	Akita Prefectural University	Japan
Minagawa, Masaru	Tokyo City University	Japan

Mu-Yen Chen	National Taichung University of Science and Tchonology	Taiwan
Norizzah Abd Rashid	Universiti Teknologi MARA	Malaysia
Onder Turan	Anadolu University	Turkey
Osman Adiguzel	Firat University	Turkey
P. Sivaprakash	A.S.L. Pauls College of Engineering & Technology	India
P.Sanjeevikumar	University of Bologna	India
Panayotis S. Tremante M.	Universidad Central de Venezuela	Venezuela
Patrick S.K. Chua	Singapore Institute of Technology	Singapore
Pei-Jeng Kuo	National Chengchi University	Taiwan
Phongsak Phakamach	North Eastern University	Thailand
Rainer Buchholz	Friedrich-Alexander University	Germany
Rajeev Kaula	Missouri State University	USA
Ransinchung R.N.(Ranjan)	Indian Institute of Technology	India
Ren-Zuo Wang	National Center for Research on Earthquake Engineering	Taiwan
Rong-Horng Chen	National Chiayi University	Taiwan
Roslan Zainal Abidin	Infrastructure University Kuala Lumpur	Malaysia
S. Ahmed John	Jamal Mohamed College	India
Saji Baby	Kuwait University	KUWAIT
Samuel Sheng-Wen Tseng	National Taiwan Ocean University	Taiwan
Sergei Gorlatch	University of Muenster	Germany
Shen-Long Tsai	National Taiwan University of Science and Technology	Taiwan
Sittisak Uparivong	Khon Kaen University	Thailand
Song Yu	Fukuoka Institute of Technology	Japan
Sudhir C.V.	Caledonian College of Engineering	Oman
Suresh. B. Gholse.	Rtm Nagpur University	India
Thippayarat Chahomchuen	Kasetsart University	Thailand
Victor A. Skormin	Binghamton University	USA
Vivian Louis Forbes	Wuhan University	China
William L. Baker	Indiana State University	USA
Wong Hai Ming	The University of Hong Kong	Hong Kong
Wong Tsun Tat	The Hong Kong Polytechnic University	Hong Kong
Wooyoung Shim	Yonsei University	South Korea
Ya-Fen Chang	National Taichung University of Science and Tchonology	Taiwan
Yasuhiko Koike	Tokyo University of Agriculture	Japan
Yee-Wen Yen	National Taiwan University of Science and Technology	Taiwan
Yoshida Masafumi	Tokyo City University	Japan
Youngjune Park	Gwangju Institute of Science and Technology	South Korea
Yuan-Lung Lo	Tamkang University	Taiwan

## International Committee of Social Sciences

Adeeb Jarrah	United Arab Emirates University	UAE
Ahrar Husain	Jamia Millia Islamia - A Central University	Indian
Al Faithrich C. Navarrete	University of Santo Tomas	Philippines
Alex Yao Tang	National Cheng Kung University	Taiwan
Alice H. Y. Hon	The Hong Kong Polytechnic University	Hong Kong
Amol Gore		Thailand
Atefeh Ferdosipour	Azad University (East Tehran Branch)	Iran
Azidah Abu Ziden	Universiti Sains Malaysia	Malaysia
Azilawati	Nanyang Technological University, Singapore	Singapore
Aziz Bin Ahmad	University Malaysia Terengganu	Malaysia
B. Suresh Lal	Kakatiya University	India
Badar Alam Iqbal	Aligarh Muslim University	India
Bayram Akarsu	Erciyes University	Turkey
Bor-Tyng Wang	Feng Chia University	Taiwan
Brian Hunt	Mahidol University	Thailand
Carrie Hagan	Indiana University	USA
Cathine G. Scott	Morris College in Sumter	USA
Chang Y. Lee	California State University, Chico	USA
Chen-Sung Chang	Nan Kai University of Technology	Taiwan
Cheol Park	Korea University	South Korea
Chib	Datta Meghe Institute of Management Studies	India
Ching-Yi Tien	I-Shou University	Taiwan
Darshan kaur Narang	University of Rajasthan, Jaipur	India
David Yoon	Universitaire Léonard de Vinci	France
Dharam Vir Mahajan	CCS university, Meerut	India
Donald L. Amoroso	Auburn University at Montgomery	USA
Donghun Lee	Sungkyunkwan University	South Korea
E. Daniel Shim	Sacred Heart University	USA
Eddy K.W. Li	The Chinese University of Hong Kong	Hong Kong
Edward Hwang	Chung Hua University	Taiwan
Emiko Tsuyuki	Chuo University	Japan

Ernest Lim Kok Seng	Taylor's University	Malaysia
Funda Varnaci Uzun	Aksaray University	Turkey
Gajendra Singh	Satyawati College, University of Delhi	India
Halil Ibrahim Gurcan	Anadolu University	Turkey
Hamzeh Dodeen	United Arab Emirates University	UAE
Intan Soliha Binti Ibrahim	Universiti Malaysia Sabah	Malaysia
Irene Guatno Toribio	Philippine Christian University	Philippines
Jalil Safaei	University of Northern British Columbia	Canada
Jamie Halsall	University of Huddersfield	UK
Jian-Horng Chen	Chung Shan Medical University	Taiwan
Jill Thompson-White	Edith Cowan University	Australia
John Christian S. Jardin	Palawan State University	Philippines
Jonas Chao-Pen Yu	Takming University of Science and Technology	Taiwan
Jongkun Jun	Hankuk University of Foreign Studies	South Korea
Joseph Lau	The University of Hong Kong	Hong Kong
Joyce Zhou	Emporia State University	USA
Julia Wong	Family Justice Courts Singapore	Singapore
K. Prakash Vel	University of Wollongong	Dubai
Kaedsiri Jaroenwisarn	Silpakorn Univesity	Thailand
Kanokphon Chantanarungpak	Srinakharinwirot University	Thailand
Karen Miranda Fernandez	Imus Institute	Philippines
Keith H. Sakuda	University of Hawai'i — West O'ahu	USA
Kim , Kyung Hee	Mokpo National University	South Korea
Kim Sangho	Ritsumeikan Asia Pacific University	Japan
Kim, Deok Man	Baekseok University	South Korea
Kimble Byrd	Rowan University	USA
Krishna Govender	AAA School of Advertising	South Africa
Kurt W. Ackermann	Hokusei Gakuen University	Japan
Lin, Hsiao-Tseng	Meiho University	Taiwan
Linda Oshita	University of Hawaii	USA
Linda Ross	Rowan University	USA
Maria Cristina M. De los Santos	Kyungdong University-Global Campus	South Korea

Marie Paz E. Morales	Philippine Normal University	Philippines
Masoud Kavooosi	The George Washington University	USA
Mehryar Nooriafshar	University of Southern Queensland	Australia
Michael Kao	Chang Gung University	Taiwan
Micheal Kon	Aletheia University	Taiwan
Ming-Chang Chih	National Chung Hsing University	Taiwan
Mingchu (Neal) Luo	Emporia State University	USA
Mohamad Hafis Amat Simin	University Sultan Zainal Abdin	Malaysia
N. S. Ravishankar	Axis Bank	India
Naim Uzun	Aksaray University	Turkey
Nezaket Memmedli	Azerbaijan National Academy of Sciences	Azerbaijan
Obydullah Al Marjuk	Independent University, Bangladesh	Bangladesh
Ozgul Keles	Aksaray University	Turkey
Prasong Tanpichai	Kasetsart University	Thailand
Qi Wang	University of Southern Denmark	China
Rajesh U. Chheda	Shri. MD Shah Mahila College	India
Ramayah Thurasamy	Universiti Sains Malaysia	Malaysia
Reem Abed Almotaleb Abuiyada	Dhofar University	Palestine
Ricky Ng	Vocational Training Council	Hong Kong
Ronald Griffin	Florida Agricultural & Mechanical University	USA
Rotaru Ioan-Gheorghe	Timotheus Brethren Theological Insititute of Bucharest	Romania
Ruby Ann L. Ayo	Bicol University	Philippines
Sadiq Abdulwahed Ahmed Ismail	United Arab Emirates University	UAE
Sally dhruva' Stephenson	Frosterburg State University	USA
Seonjeong Ally Lee	Kent State University	USA
Shaik. Feroz	Caledonian College of Engineering	Oman
SHANG Songmin	The Hong Kong Polytechnic University	Hong Kong
Shujen Lee Chang	Asia University	Taiwan
Soon SONG	Wonkwang University	South Korea
Suzanne Beasterfield	Idaho State University	USA
Szu-Wei (Chris) Chen	I-Shou University	Taiwan

T.S.Devaraja	University of Mysore, Hemangothri Campus	India
Tan Khay Boon	SIM Global Education	Singapore
Theeraphab Phetmalaikul	Srinakharinwirot University	Thailand
Thoedsak Chomtohsuwan	Rangsit University	Thailand
Vijayaletchumy Subramaniam	Universitas Putra Malaysia	Malaysia
Wang Yu-Shan	National Kaohsiung First University of Science and Technology	Taiwan
Warren Matthews	Belhaven University	USA
Wei-Cheng(Joseph) Mau	Wichita State University	USA
Wen-Pei Sung	National Chin-Yi University of Technology	Taiwan
William Richeson	University of Kentucky	USA
Ye PeiShi	Family Justice Courts Singapore	Singapore
Ying Zhang	Southeast University	China
Yong-Ho Kim	Pukyong National University	South Korea
Yuki Yokohama	Kanto Gakuin University	Japan
Zabihollah Rezaee	The University of Memphis	USA
Zhou Xiao	Fudan University	China

## *Special Thanks to Session Chairs*

---

Deacha Puangdownreong	South-East Asia University, Bangkok
Ling Chun Hung	Shih Hsin University
Ratima Tianchai	Songkhla Rajabhat University
Pongchanun Luangpaiboon	Thammasat University
Athakorn Kengpol	King Mongkut's University of Technology North Bangkok
Pei-Kan Yang	National Chengchi University
Pei-Chun Lin	National Cheng Kung University
Hiroshi Hasegawa	Curtin University
Woojin Kim	Seoul National University
Tung-Chiou Akiyo Pahalaan Huang	Fo Guang University
Phacharaporn Bunyawanichakul	Kasetsart University
Prawit Chumchu	Kasetsart University Sriracha Campus
Wen-Der Yu	Chaoyang University of Technology
Teerapot Wessapan	Eastern Asia University
Seungkoo Kang	Korea National Open University
Jeou-Shyan Horng	Jinwen University of Science and Technology
Peter Firkola	Hokkaido University
The-Nan Chang	Tatung University
Kwang Il Kang	Korea Science Academy of KAIST
Amporn Tamronglak	Thammasat University
Kuo-Ping Lin	Lunghwa University of Science and Technology
Sun A Oh	Gwangju University
Ming-Lou Liu	I-Shou University
Ping Wu	Singapore University of Technology and Design
Azila Sarkawi	International Islamic University Malaysia
Chih-Wen Fan	National Dong Hwa University
Hsin-Ling Hsieh	Ming Chi University Of Technology
Chomchid Phromsin	Kasetsart University
Hung-Pin Shih	Hsuan Chuang University
Peter Raymond Whipp	Murdoch University
Chun-Hung Cheng	The Chinese University of Hong Kong
Cheng-Hung Huang	National Cheng Kung University
Moneera Almerab	University of Hail
Jin Oh Chung	Sunchon National University
Jonathan Juin-Jen Cheng	University of Texas Southwestern Medical Center



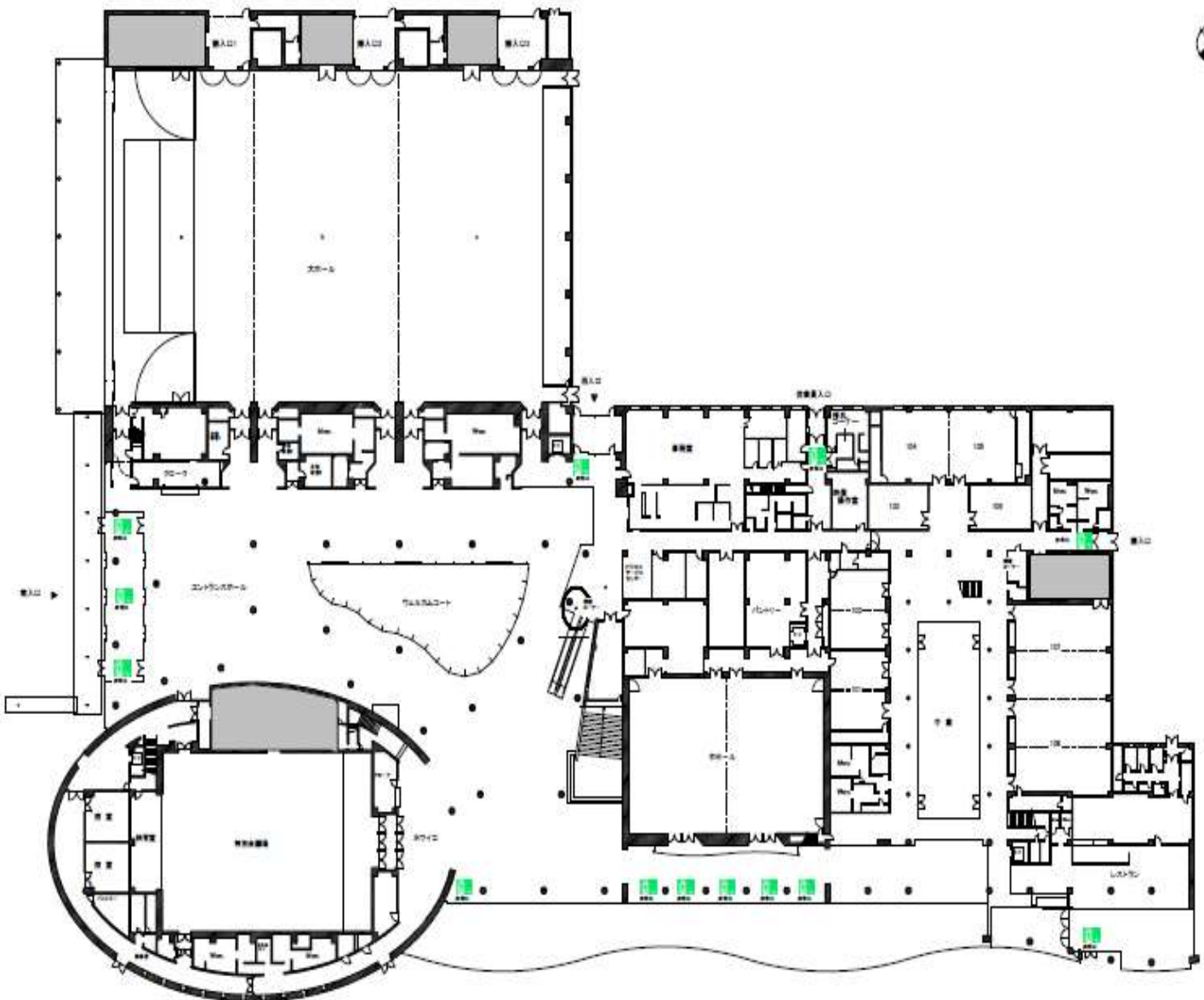
# Conference Venue Information

## Sapporo Convention Center

1-1-1 Higashi-Sapporo 6-jo, Shiroishi-ku, Sapporo, 003-0006, Japan

TEL: +81-11-817-1010

FAX: +81-11-820-4300



## Transportation to Sapporo Convention Center

Sapporo Convention Center is located approximately 10 min by taxi from Sapporo city center.

### Visitors travelling with subway from Sapporo Station or from the Odori area

About 23 minutes from Sapporo Subway Station

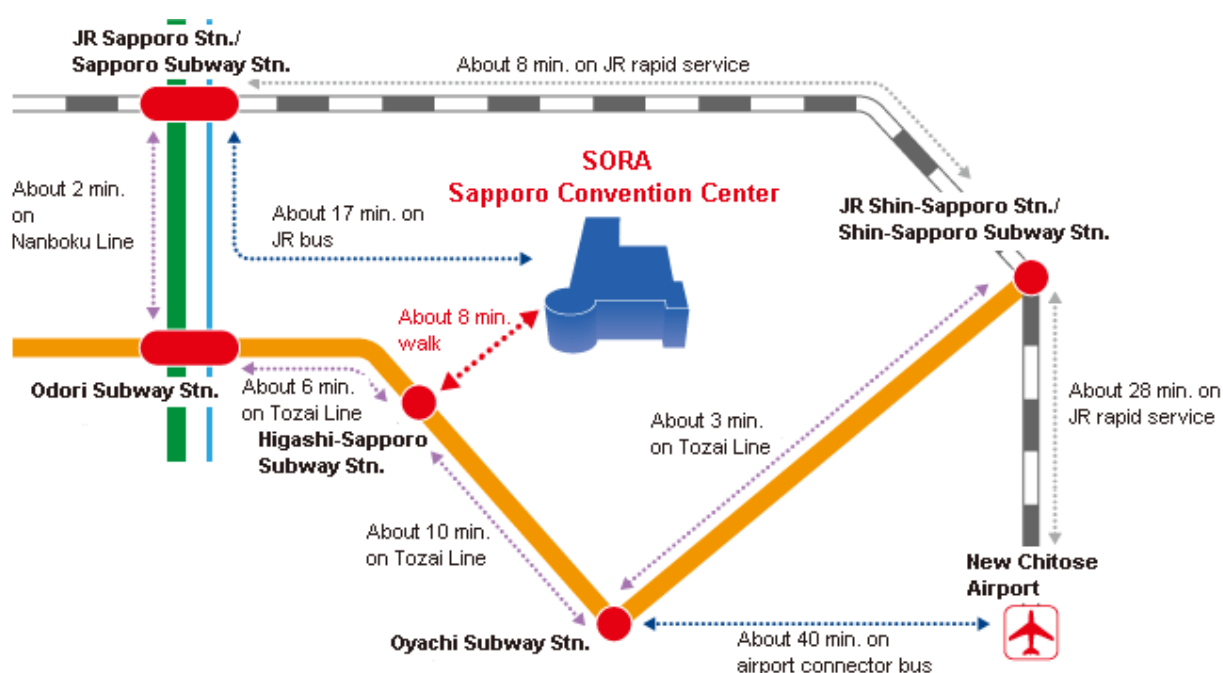
About 21 minutes from Odori Subway Station

From Sapporo Subway Station, take Nanboku Line to Odori Station. Change to the subway Tozai Line, and get off at Higashi-Sapporo Station. Exit from Exit 1, and head to your right. Turn right at the second traffic light (look for the Hokkaido Energetic car park), and head straight along the road. You will find the Convention Center in front of you within an 8-min. walk.

### Visitors travelling via subway from the Shin-Sapporo area

About 21 minutes from Shin-Sapporo

From Shin-Sapporo Subway Station, take Tozai Line, and get off at Higashi-Sapporo Station. Exit from Exit 2, and head to your left. Cross the street at the second traffic light (look for the large Nippon Express billboard), and head straight along the road. You will find the Convention Center in front of you within an 8-min. walk.



## *Conference Schedule*

<b>Thursday, January 19, 2017</b>		
<b>Oral Presentation</b>		
<b>1<sup>st</sup> Floor, Sapporo Convention Center</b>		
<b>Time</b>	<b>Schedule</b>	<b>Venue</b>
<b>13:00-16:00</b>	Registration	Pre Function Area
<b>13:30-15:00</b>	Electrical and Electronic Engineering (1) /Electronics	102
	Social Studies (1)	107A
	Education (1)	107B
<b>15:00-15:15</b>	<b>Tea Break &amp; Networking</b>	Pre Function Area
<b>15:15-16:30</b>	Industrial and Manufacturing Technologies / Materials Science and Engineering (1)	102
	Chemical Engineering	107A
	Law	107B

<b>Thursday, January 19, 2017</b>	
<b>Poster Presentation</b>	
<b>1<sup>st</sup> Floor, Poster Room 101, Sapporo Convention Center</b>	
<b>Time</b>	<b>Schedule</b>
<b>13:30-14:30</b>	<b>Poster Sessions (1)</b> Computer Engineering and Technology / Computer Technologies / Information Engineering and Technology / Engineering Technologies / Agricultural Engineering and Technologies / Nanotechnology / Ocean Technologies / Robotics / Electrical and Electronic Engineering (1)
<b>15:00-16:00</b>	<b>Poster Sessions (2)</b> Education (1) / Society (1) / Social Studies

<b>Friday, January 20, 2017</b>		
<b>Oral Presentation</b>		
<b>1<sup>st</sup> Floor, Sapporo Convention Center</b>		
<b>Time</b>	<b>Schedule</b>	<b>Venue</b>
<b>08:30-16:00</b>	Registration	Pre Function Area
<b>09:00-10:30</b>	<b><u>Nature Science Keynote Speech</u></b> <b>Professor Ir. Dr. Hj. Ramli Nazir</b> Universiti Teknologi Malaysia <b><u>Topic: Lesson Learn from Geotechnical Engineering Failure</u></b>	102
	Business & Management (1)	107A
	Education (2)	107B
	Finance & Accounting & Banking	108A
	Humanities and Culture Studies	108B
<b>10:30-10:45</b>	<b>Tea Break &amp; Networking</b>	Pre Function Area
<b>10:45-12:15</b>	<b><u>Social Science Keynote Speech</u></b> <b>Professor Sally dhruva' Stephenson</b> Frostburg State University <b><u>Topic: Cultural Explorations through Virtual Simulations</u></b>	102
	Astronomy/ Aircraft and Flight/ Aeronautics & Aerospace Engineering/ Transportation	107A
	Computer Engineering and Technology (1)/ Computer Technologies	107B
	Civil Engineering (1)	108A
	Mechanical Engineering and Technology(1)	108B
<b>12:15-13:15</b>	<b>Lunch Time</b>	Mid-Sized Hall
<b>13:15-14:45</b>	Communication / Art & Design	102
	Business & Management (2)	107A
	Education(3)	107B
	Electrical and Electronic Engineering(2) / Power & Energy Engineering	108A
	Biology/ Biotechnology/ Biological Engineering (1)	108B
<b>14:45-15:00</b>	<b>Tea Break &amp; Networking</b>	Pre Function Area
<b>15:00-16:30</b>	Social Studies (2)/ Society	102
	Business & Management (3)	107A

<b>Friday, January 20, 2017</b>		
<b>Oral Presentation</b>		
<b>1<sup>st</sup> Floor, Sapporo Convention Center</b>		
<b>Time</b>	<b>Schedule</b>	<b>Venue</b>
<b>15:00-16:30</b>	Education (4)	107B
	Civil Engineering (2)	108A
	Engineering Technologies	108B

<b>Friday, January 20, 2017</b>	
<b>Poster Presentation</b>	
<b>1<sup>st</sup> Floor, Poster Room 101, Sapporo Convention Center</b>	
<b>Time</b>	<b>Schedule</b>
<b>09:30-10:30</b>	<b>Poster Sessions (3)</b> Materials Science and Engineering (1) / Materials
<b>11:00-12:00</b>	<b>Poster Sessions (4)</b> Business & Management / Finance & Accounting & Banking / Education (2) / Literature and Linguistics
<b>13:30-14:30</b>	<b>Poster Sessions (5)</b> Society (2)
<b>15:00-16:00</b>	<b>Poster Sessions (6)</b> Mechanical Engineering and Technology / Industrial and Manufacturing Technologies / Physics / Environmental Engineering / Biological Engineering / Earth Sciences

<b>Saturday, January 21, 2017</b>		
<b>Oral Presentation</b>		
<b>1<sup>st</sup> Floor, Sapporo Convention Center</b>		
<b>Time</b>	<b>Schedule</b>	<b>Venue</b>
<b>08:30-14:00</b>	Registration	Pre Function Area
<b>08:45-10:15</b>	Social Studies (3)	107A
	Education (5)	107B
	Information Engineering and Technology (1) / Computer Engineering and Technology (2)	108A
	Environmental Engineering/ Earth Sciences	108B
<b>10:15-10:30</b>	<b>Tea Break &amp; Networking</b>	Pre Function Area
<b>10:30-12:00</b>	Business & Management (4)	107A
	Education (6)	107B
	Information Engineering and Technology(2) / Nanotechnology	108A
	Mechanical Engineering and Technology(2)/ Buildings and Construction	108B
<b>12:00-13:00</b>	<b>Lunch Time</b>	Mid-Sized Hall
<b>13:00-14:30</b>	Psychology	107A
	Materials Science and Engineering(2)/ Materials	108A
	Biological Engineering	108B

<b>Saturday, January 21, 2017</b>	
<b>Poster Presentation</b>	
<b>1<sup>st</sup> Floor, Poster Room 101, Sapporo Convention Center</b>	
<b>Time</b>	<b>Schedule</b>
<b>09:30-10:30</b>	<b>Poster Sessions (7)</b> Biomedical Technologies / Biology / Civil Engineering / Transportation / Aeronautics & Aerospace Engineering
<b>11:00-12:00</b>	<b>Poster Sessions (8)</b> Psychology / Communication / Chemistry / Chemical Engineering
<b>13:00-14:00</b>	<b>Poster Sessions (9)</b> Electrical and Electronic Engineering (2) / Electronics / Radiation Protection and Dosimetry / Power & Energy Engineering / Materials Science and Engineering (2)

## ***Nature Sciences Keynote Speech***

09:00 - 10:30, Friday, January 20, 2017, Room 102, 1<sup>st</sup> Floor

---

### ***Topic:***

#### ***Lesson Learn from Geotechnical Engineering Failure***

#### ***Prof. Ir. Dr. Hj. Ramli Nazir***

Professor of Geotechnical Engineering  
Deputy Director,  
Tropical GeoEngineering Centre,  
Faculty of Civil Engineering  
Universiti Teknologi Malaysia



---

### **Abstract**

The role of the engineer is to respond to a need by building or creating something along a certain set of guidelines or specifications which performs a given function. An engineer, as a professional, has a responsibility to their client or employer, to their profession, and to the general public, to perform their duties in as conscientious a manner as possible. Usually this entails far more than just acting within the bounds of law. An engineer should avoid conflicts of interest, does not attempt to misrepresent their knowledge so as to accept jobs outside their area of expertise, acts in the best interests of society and the environment, fulfills the terms of their contracts or agreements in a thorough and professional manner. Often, a deficiency in engineering ethics is found to be one of the root causes of an engineering failure. Hence, the engineer must struggle to design in such a way as to avoid failure, which could result in loss of property, damage to the environment of the user of that technology, and possibly injury or even loss of life. Geotechnical Engineering fields are related with daily life. Slopes, foundations, excavations, flood barrier, anchoring to name a few are geotechnical construction that needs high safety design for the comfort of the public. The main reason is to reduced fear, and perceived risk. The design and constructions has been improvised in lieu to the lesson learn from the previous failure. New developments in design are often the direct consequence of lessons learnt from previous failures, which are caused when the designers went too far beyond the state-of the art or the contractors did not implement the design intent in the construction. Design alone shall not be the main reason of failures.

Other activities apart from design inadequacy that links towards geotechnical engineering failures are poor conceptual design, lack of communication between designer and builders, lack of engineering details, poor judgment, lack of maintenance after built, poor in construction and practices. The chain of activities as mentioned would normally contributes towards the event of failure. There is no question that the trial-and-error process of designing and constructing, over the centuries, resulted in the loss of properties and life. It is not that failure is desirable, or that anyone hopes for or aims for it. But failures, sometimes appalling, are inevitable, and given this fact, engineers say it pays to make good lesson learned to prevent any possible future mistakes.

### **Brief Introduction of Prof. Ir. Dr. Hj. Ramli Nazir**

Professor Ir. DR. Hj. Ramli bin Hj. Nazir is a Professor in Geotechnical Engineering at Universiti Teknologi Malaysia since 1989. He currently hold a position as a Deputy Director at Centre of Tropical Geoengineering. He holds a B. Civil Eng. from UTM and PhD from the University of Liverpool specialized in Geotechnical Engineering. He has more than 25 years' experience in the field of Geotechnical Engineering, especially Foundations, Ground Improvement and Geotechnical Forensics Engineering and have wrote more than 100 technical papers and Journals related to his field of expertise. In addition as a Lecturer in Geotechnical Engineering, he is also a Professional Engineer who have numerous experience as a Design Engineer, Independent Design Checker and Geotechnical Advisor to various government and private agencies and also involved in many Civil Forensic works including Structural and Infrastructures in Malaysia. In addition to engineering education and consultation activities, he is a Member of the Technical Committee on Eurocode 7 Malaysian Annex which responsible for regulating the use of Eurocode 7 according to local needs, Member of Institution of Engineers Malaysia, Member of Malaysia Geotechnical Society and Member of Society of Engineering Education Malaysia. He also provides an expertise support for Standards and Industrial Research Institute of Malaysia (SIRIM) and Public Work Department (JKR), in the design specification work for specialized work such as Soil Anchor and Load Testing. He is also an invited Geotechnical speaker for training and workshops to government and private technical agencies such as JKR, PETRONAS, SHELL, Malaysia Productivity Corporation, MARA and Institution of Engineers Malaysia.



## ***Social Sciences Keynote Speech***

10:45 - 12:15, Friday, January 20, 2017, Room 102, 1<sup>st</sup> Floor

---

### ***Topic:***

### ***Cultural Explorations through Virtual Simulations***

### ***Prof. Sally dhruva' Stephenson***

Professor, Department of Educational Professions  
Frostburg State University  
Frostburg, Maryland USA



---

### **Abstract**

Since technology has made global communication nearly instantaneous and as the barrier between man and machine grows ever thinner, creative minds expand our ways of knowing, learning and relating to one another through continually evolving systems. Hundreds of “virtual worlds” now simulate three-dimensional locations where participants can design and build their environments and interact in the form of animated characters called avatars. Soon to become mainstream is the use of VR (“virtual reality”) accessories which intensify the sensory experience to make it seem even more real. Considering these developing platforms and technologies, the research question was asked, “How can virtual world simulations provide opportunities to explore different cultures?”

The most well-known and frequently visited such world is Second Life (SL) which was released to the public in 2003 and has approximately 30,000 – 50,000 users logged in at any given time. To participate in a virtual world, one registers for a free account, selects a basic avatar form, downloads a viewer and logs in with a password. He must then to learn to maneuver his avatar (which can walk, run, fly and “teleport” between locations), communicate in private and open text-based chat, manipulate objects, and use search functions to look for places or events of interest. Participation is limited to adults 18 years of age and older except under strictly monitored conditions. Getting started in Second Life is not easy for many users; multiple research studies report technical

difficulties both with technology issues and with gaining facility in basic Second Life skills (Coban, Karakus, Karaman, Gunay & Goktas, 2015; Gregory et al., 2015; Dickey, 2011; Jee, 2014; Reinsmith-Jones, Kibbe, Crayton & Campbell, 2015). A study by Aldosemani, Raddaoui, Shepherd and Thompson (2016), however, recognized the technical challenges but did not observe the “steep learning curve” (p. 38); this study brought Saudis and Americans together in a virtual traditional Saudi tearoom for conversations and concluded that “virtual environments may facilitate global third places as users gain access to cultures and communities throughout the world” (p. 39).

This researcher’s qualitative study utilized purposive sampling to identify participants in specifically-designed cultural simulations (“sims”) in Second Life and interview them about their experiences. Both owners/administrators and group participants were interviewed in text-based interviews which were then analyzed through open coding and thematic analysis. Examples of sims which were studied were “1920s Berlin” and “Little Yoshiwara” which depicts the Bakumatsu era of pre-modern Japan. Several themes emerged during the study. One theme was that participation in these sites gave users a meaningful connection with the culture and time period. A member of the 1920s Berlin group said, “It gives us a way to learn over borders, to look deeper into history.” A visitor to Little Yoshiwara said that she likes to “worship at the shrine, attend a tea ceremony.” Another theme is that certain sims were found to have been created with a particular purpose in mind: recreating a school under construction in Kenya and collecting donations to feed the children through benefit concerts or providing a Mexican atmosphere for Spanish language learning. In conclusion, reflecting on the sharing of cultures through the interactive environment of a virtual world, the words of the creator of 1920s Berlin resonate with possibility: “My goal has been met and exceeded a million times. . . . I never expected for it to turn into a vibrant, educational, active global community.”

### **Brief Introduction of Prof. Sally dhruva’ Stephenson**

Dr. Sally dhruva Stephenson is a Professor in the Department of Educational Professions at Frostburg State University in Maryland, USA. Prior to entering higher education, she taught elementary gifted education in public schools. She has taught as a visiting professor in the Graduate Studies College of Hunan Normal University in Changsha, Hunan Province, China, and will be spending the upcoming semester as a guest lecturer at several Chinese universities. She is also a performing musician with several CDs of original music and streams live music performances in virtual worlds.

### Electrical and Electronic Engineering (1) /Electronics

**Thursday, January 19, 2017      13:30-15:00      Room 102**

Session Chair: Prof. Deacha Puangdownreong

---

**ACENS-68876**

**Digital Record for Analog Measurement**

Krisada Vilailak | *Vongchavalitkul University*

**ACENS-62291**

**Model Order Reduction of Linear Time-Invariant Dynamic Systems via Cuckoo Search**

Deacha Puangdownreong | *South-East Asia University, Bangkok*

Chaiyo Thammarat | *South-East Asia University, Bangkok*

Auttarat Nawikavatan | *South-East Asia University, Bangkok*

Saroj Hlungnamtip | *South-East Asia University, Bangkok*

**ACENS-67602**

**Design and Implementation of a Digitally Controlled Boost and Bidirectional Converters for Photovoltaic System**

Monthon Nawong | *Rajamangala University of Technology Thanyaburi*

**ACENS-67641**

**An Improved DOP Matrix for User Location Estimation in GNSSs**

Keunhong Chae | *Sungkyunkwan University*

Seokho Yoon | *Sungkyunkwan University*

**ICAS-292****A Context-aware Identity Authentication Scheme Based on Bayes' Theorem for Cloud Service**

Jing-Li Fang | *National Kaohsiung University of Applied Sciences*

Yi-Ting Chen | *National Kaohsiung University of Applied Sciences*

Mong-Fong Horng | *National Kaohsiung University of Applied Sciences*

Jaw-Shyang Wu | *TaJen University*

Jiun-Huei Ho | *Cheng Shiu University*

Yuh Ming Cheng | *Shu-Te University*

**ICAS-325****A 2D-Pattern Verification Method of Electronic Component Padstack with EDA Compatibility**

Yu-Siang Fan Jiang | *National Kaohsiung University of Applied Science*

Yi-Ting Chen | *National Kaohsiung University of Applied Science*

Kun-You Lin | *National Kaohsiung University of Applied Science*

Chin-Shiu Shieh | *National Kaohsiung University of Applied Science*

Mong-Fong Horng | *National Kaohsiung University of Applied Science*

Bin-Yih Liao | *National Kaohsiung University of Applied Science*

## **Social Studies (1)**

**Thursday, January 19, 2017      13:30-15:00      Room 107A**

Session Chair: Prof. Ling Chun Hung

---

### **ISSSM-3202**

#### **Political Business Cycle in Asian Countries**

Ling Chun Hung | *Shih Hsin Univeristy*

Yu Tou Hsien | *Shih Hsin Univeristy*

### **ISSSM-3478**

#### **Towards A Brighter Future: The Risks and Rewards of New Ceramic Print Technology**

Peter Oakley | *Royal College of Art*

### **ISSSM-3482**

#### **An Analysis of Crime Hotspots with Improvised Explosive Devices in Narathiwat Province, Thailand**

Ratthawich Ananbhornsi | *Srinakharinwirot University*

Sureeporn Nipithwittaya | *Srinakharinwirot University*

Pakorn Meksangsouy | *Srinakharinwirot University*

### **ISSSM-3413**

#### **Factors Associated with Development of Pre-School Children in Day Care**

Paranee Anusonthi | *Suranaree University of Technology*

### **ISSSM-3374**

#### **A Statistical Evaluation and Modeling on the Social Transitivity Behavior**

Chiao-Yi Yang | *Academia Sinica*

Frederick Kin Hing Phoa | *Academia Sinica*

Yen-Sheng Chiang | *Chinese University of Hong Kong*

## **Education (1)**

**Thursday, January 19, 2017      13:30-15:00      Room 107B**

Session Chair: Prof. Ratima Tianchai

---

### **ICEEPS-2617**

#### **Different Picture Configuration and Picture Detail on Student Learning Achievement**

Shin-Yuan Chen | *National Chiayi University*

Han-Chin Liu | *National Chiayi University*

### **ICEEPS-2733**

#### **The Development of Reading Comprehension Exercises for Prathomsuksa Six Students in the Primary Schools Under the Office Trang Provincial Education Service Area 1**

Ratima Tianchai | *Songkhla Rajabhat University*

### **ICEEPS-2670**

#### **An Analysis of World Bank's Aid to China's Higher Education**

Qiyang Zhou | *Pusan National University*

Young Hwan Kim | *Pusan National University*

### **ICEEPS-2697**

#### **Understanding Self and Others through Contemplative Approach**

Phawika Paksa | *Suratthani Rajabhat University*

Niramom Jansuwan | *Suratthani Rajabhat University*

### **ICEEPS-2661**

#### **The Effects of Self-Management on Work Skills of the Senior High School Student with Mild Intellectual Disabilities**

Siang-Lan Lin | *National Changhua University of Education*

# **Industrial and Manufacturing Technologies / Materials**

## **Science and Engineering (1)**

**Thursday, January 19, 2017**

**15:15-16:30**

**Room 102**

Session Chair: Prof. Pongchanun Luangpaiboon

---

### **ICAS-232**

#### **A Study of Shuffled Frog Leaping Algorithm Parameters on Multi-Objective Linear Programming Model**

Pongchanun Luangpaiboon | *Thammasat University*

### **ACENS-67489**

#### **Optical Design of CRI for Providing LED Illumination in Underwater**

Ming Hui Lai | *National Chiao Tung University*

Chinghua Hung | *National Chiao Tung University*

### **ACENS-67541**

#### **The Development of Wear Resistant Al-Mg-Si Alloy Fabricated by a New Type SIMA Process**

Chia-Wei Lin | *National Cheng Kung University*

Fei-Yi Hung | *National Cheng Kung University*

Truan-Sheng Lui | *National Cheng Kung University*

### **ACENS-67545**

#### **A Study on the Microstructure and Mechanical Properties of Al-10Si-1Mg Alloy Fabricated by Selective Laser Melting Process**

Tsai Chun-Lin | *National Cheng Kung University*

Fei-Yi Hung | *National Cheng Kung University*

Truan-Sheng Lui | *National Cheng Kung University*

### **ACENS-67447**

#### **The Injection Moulding of Blended Agricultural Waste Rice Husks with High-Density Polyethylene**

Richard C.M. Yam | *City University of Hong Kong*

Dominic M.T. Mak | *City University of Hong Kong*

**ACENS-62293**

**Application of Intensified Current Search to Traveling Transportation Problem  
Optimization**

Supaporn Suwannarongsri | *King Mongkut's University of Technology North Bangkok,  
Bangkok*

Deacha Puangdownreong | *South-East Asia University, Bangkok*



## Chemical Engineering

Thursday, January 19, 2017

15:15-16:30

Room 107A

Session Chair: Prof. Athakorn Kengpol

---

### ACENS-66780

#### Energy Saving in an Atmospheric Crude Distillation Unit

Young Han Kim | *Dong-A University*

### ACENS-67574

#### An Application of Design of Experiment for Reducing Rework and Scrap in Anodization Process: A Case Study in a Cosmetic Packaging Industry

Athakorn Kengpol | *King Mongkut's University of Technology North Bangkok*

Wichuda Mingsakul | *King Mongkut's University of Technology North Bangkok*

### ACENS-67595

#### Modified Cellulose Acetate Membrane for RO Desalination

Tippabust Eksangsri | *Thammasat University*

### ACENS-69620

#### Synthesis and Electrochemical Properties of Hierarchically Porous $\text{Zn}(\text{Co}_{1-x}\text{Mn}_x)_2\text{O}_4$ Anode for Li-Ion Batteries via Cation Substitution Design

Wei-Ren Liu | *Chung Yuan Christian University*

## Law

**Thursday, January 19, 2017      15:15-16:30      Room 107B**

Session Chair: Prof. Pei-Kan Yang

---

### **ISSSM-3466**

#### **Pro-Health Settlement of Tobacco Disputes under the WHO/FCTC and Its Interaction with Trade and Investment Dispute Settlement Mechanisms**

Pei-Kan Yang | *National Chengchi University*

### **ISSSM-3436**

#### **Study on Propriety of Medical Dispute Management in National Taiwan University Hospital Yun-Lin Branch**

Shih-Yu Chen | *National Taiwan University Hospital Yun-Lin Branch*

Yun-Chen Lee | *National Yunlin University of Science and Technology*

Yueh-Hsun Tsai | *National Yunlin University of Science and Technology*

### **ISSSM-3548**

#### **The Value of Privacy**

Anna Lui | *City University of Hong Kong*

### **ISSSM-3610**

#### **Forced Internal Displacement: A Topic Relevant to Human Rights?**

Mónica Flores Gómez | *Universidad Nacional Autónoma de México (UNAM)*

## **Business & Management (1)**

**Friday, January 20, 2017**

**09:00-10:30**

**Room 107A**

Session Chair: Prof. Pei-Chun Lin

---

### **ISSSM-3354**

#### **An Empirical Revenue Model for the High-Density Expansion of Convenient Stores in Urban City of Taiwan**

Chen-Cheng Chen | *National Kaohsiung First University of Science and Technology*

Pei-Chun Lin | *National Cheng Kung University*

Jenhung Wang | *National Kaohsiung First University of Science and Technology*

### **ISSSM-3410**

#### **Barriers Expatriates Encounter on Cross Cultural Interactions**

Wen-Hsiang Lai | *Feng Chia University*

Ching-Wen Yang | *Feng Chia University*

### **ISSSM-3502**

#### **Sustainability of Cultural Entrepreneurs (Thai Traditional Textile) in Doing Business**

Yupha Taweewattanakitborvon | *Chulalongkorn University*

Pongpun Anuntavoranich | *Chulalongkorn University*

Achara Chandrachai | *Chulalongkorn University*

Phannaphatr Savetpanuvong | *Chulalongkorn University*

### **ISSSM-3431**

#### **The Relationship Model among Tourists' Nostalgic Emotion, Experiential Value, Place Attachment and Behavior Intention in the Cultural and Creative Industries: A Case of Blueprint Cultural and Creative Park in Tainan**

Li-Hao Chen | *National Kaohsiung University of Hospitality and Tourism*

Tang-Chung Kan | *National Kaohsiung University of Hospitality and Tourism*

Joyce Hsiu-Yu Chen | *National Kaohsiung University of Hospitality and Tourism*

## **Education (2)**

**Friday, January 20, 2017**

**09:00-10:30**

**Room 107B**

Session Chair: Dr. Hiroshi Hasegawa

---

### **ICEEPS-2738**

#### **Exploring School Mode of Experimental Education with Mixed Age in Taiwan: A Case Study of Tai-Sing Primary School**

Yueh-Chao Tseng | *National Changhua University of Education*

### **ICEEPS-2590**

#### **Thai EFL Teachers Response to English Compliments**

Nathaya Boonkongsaen | *Vongchavalitkul University*

### **ICEEPS-2613**

#### **A Comparative Study on Multicultural Education of China and the United States : Focus on Policy and Curriculum**

Jun Lu | *Pusan National University*

Dae-Dong Hahn | *Pusan National University*

### **ICEEPS-2651**

#### **Is It Time to Turn the Digital Page? University Students' Experience of Online Reading**

Vivien Chee Pei Wei | *Universiti Sains Malaysia*

Ambigapathy Pandian | *Universiti Sains Malaysia*

### **ICEEPS-2660**

#### **Organization Development for the Excellence on Thailand Quality Award of Thai Private Universities**

Saruda Chaisuwan | *Vongchavalitkul University*

### **ICEEPS-2674**

#### **Student Perceptions of Intrinsic Enjoyment/Boredom Coping and the Cultural Significance of Study Tour Activities**

Hiroshi Hasegawa | *Curtin University*

## **Finance & Accounting & Banking**

**Friday, January 20, 2017**

**09:00-10:30**

**Room 108A**

Session Chair: Prof. Woojin Kim

---

### **ISSSM-3545**

#### **Who Has Information Advantage? Evidence from Open Market Repurchases in Taiwan**

Su-Yin Cheng | *Kainan University*

Han Hou | *Lunghwa University of Science and Technology*

### **ISSSM-3353**

#### **Foreign Direct Investment in ASEAN Economic Community**

Kulteera Thongyai | *Rajamangala University of Technology Srivijaya*

### **ISSSM-3352**

#### **The Investment Planning for Retirement of Personnel in Rajamangala University of Technology Srivijaya, Thailand**

Monthana Kongkaew | *Rajamangala University of Technology Srivijaya*

Chadamard Kaewsuksai | *Rajamangala University of Technology Srivijaya*

Nadponpichai Dulayavatit | *Rajamangala University of Technology Srivijaya*

### **ISSSM-3529**

#### **Value of Anonymity: Informed Trading through Tax Havens**

Woojin Kim | *Seoul National University*

Cheol-Won Yang | *Dankook University*

## Humanities and Culture Studies

Friday, January 20, 2017

09:00-10:30

Room 108B

Session Chair: Prof. Tung-Chiou Akiyo Pahalaan Huang

---

**ISSSM-3393**

**The Participants and Their Motivation of "Human Flesh Search"- Comparing the Phenomena between Taiwan and China (Mainland)**

Sainan Du | *National Chengchi University*

**ISSSM-3459**

**Female's Gaze in Idol Drama: A Case Study of *My Sunshine***

Yongling Song | *National Chengchi University*

**ISSSM-3451**

**The Role of Phu Tai Women through Their Local Wisdom of Indigo-Dyed Textile in Community Strengthening in Sakon Nakhon Province, Thailand**

Pokkasina Chathiphot | *Sakon Nakhon Rajabhat University*

Srikhao P. | *Sakon Nakhon Rajabhat University*

Phuraya N. | *Sakon Nakhon Rajabhat University*

**ISSSM-3477**

**A Lecturer's Applications of Translingualism in a Multiethnic Classroom Environment to Help Students to Cope with Multiethnic Situations in Positive and Fruitful Ways**

Tung-Chiou Akiyo Pahalaan Huang | *Fo Guang University*

**Astronomy/ Aircraft and Flight/ Aeronautics & Aerospace  
Engineering/ Transportation**

**Friday, January 20, 2017                      10:45-12:15      Room 107A**

**Session Chair: Prof. Phacharaporn Bunyawanichakul**

---

**ACENS-67557**

**Analytical Models of a High-Altitude Platform in Thailand**

Phacharaporn Bunyawanichakul | *Kasetsart University*

Pongwit Siribodhi | *Kasetsart University*

**ACENS-67450**

**Formation and Disintegration of Galactic Star Clusters**

Wen-Ping Chen | *National Central University*

Rwei-Ju Chuang | *Fu Jen Catholic University*

**ICAS-346**

**Grid Generation on Curvature-Recovered Surface from STL Data**

Jongyun Lee | *Chungnam National University*

Byoungsoo Kim | *Chungnam National University*

**ICAS-327**

**Analyzing the Low Cost Airline Service Quality Criteria and Attributes with Fuzzy Approach**

Nisakorn Somsuk | *Eastern Asia University*

# Computer Engineering and Technology(1)

Friday, January 20, 2017

10:45-12:15

Room 107B

Session Chair: Prof. Prawit Chumchu

---

## ACENS-67551

### **Blood Vessel Segmentation in Eye Fundus Image Using Convolutional Neural Networks**

Koki Yamada | *Yamaguchi University*

Eiji Uchino | *Yamaguchi University*

Noriaki Suetake | *Yamaguchi University*

## ACENS-67532

### **Arteriovenous Ratio Evaluation in Retinal Images of Cataract Patients**

Eisaku Tohma | *Yamaguchi University*

Eiji Uchino | *Yamaguchi University*

Noriaki Suetake | *Yamaguchi University*

## ACENS-67993

### **Interactive Placement Method for Container Loading Problem Using Depth Camera**

Ninan Kara Gicha Nasution | *Seoul National University*

Philjun Moon | *Seoul National University*

Abdallah Jamal Dweekat | *Seoul National University*

Jinwoo Park | *Seoul National University*

## ACENS-67452

### **CoAP Performance under IEEE 802.11 Power Save Mode Using NS-3 Extension**

Prawit Chumchu | *Kasetsart University Sriracha Campus*

## ACENS-67590

### **Adaptive Image Capture Based on Optimal Image Quality**

Po Ting Lin | *Chung Yuan Christian University*

Wei-Hao Lu | *Chung Yuan Christian University*

Shu-Ping Lin | *Chung Yuan Christian University*



## Civil Engineering (1)

Friday, January 20, 2017

10:45-12:15

Room 108A

Session Chair: Prof. Wen-Der Yu

---

### ACENS-67470

#### **An Integrated Automated Fall-Protection Model Based on RTLS and BIM**

Wen-Der Yu | *Chaoyang University of Technology*

Hsien-Kuan Chang | *Chung Hua University*

Shao-Tsai Cheng | *Chung Hua University*

### ACENS-67490

#### **The Bending and Push-over Tests of Cross Laminated Timber Wall**

Wei-Chong Liao | *Feng Chia University*

Jin-Lun Chang | *Feng Chia University*

Chia-How Chang | *Feng Chia University*

### ACENS-67503

#### **Problem in Implementing of Bus Rapis Transit Project in Hanoi**

Nguyen Trong Dung | *Tokai University*

Yoshitaka Kajita | *Tokai University*

### ACENS-66811

#### **Routine and Contemplations of Computer Assisted Instruction in Structural Engineering: Using “SUTstructor” In-House Software**

Sart Sukprasert | *Suranaree University of Technology*

Sooksan Horpibulsuk | *Suranaree University of Technology*

P. Moontima | *Suranaree University of Technology*

K. Kingkokgrud | *Suranaree University of Technology*

P. Pagtanglumpoo | *Suranaree University of Technology*

K.Sichan | *Suranaree University of Technology*

K. Tangtirawat | *Suranaree University of Technology*

N. Prommakhae | *Suranaree University of Technology*

**ACENS-68958**

**Effect of Degree of Saturation on Thermal Conductivity of CLSM Used for a Horizontal  
Ground Coupled Heat Pump System**

Tan Man Do | *Chonnam National University*

Youngsang Kim | *Chonnam National University*

## **Mechanical Engineering and Technology (1)**

**Friday, January 20, 2017**

**10:45-12:15**

**Room 108B**

Session Chair: Prof. Teerapot Wessapan

---

### **ACENS-67591**

#### **An Effect of Physical Properties on Temperature Increase of Material Induced by Exposure to Focused Ultrasonic Energy**

Teerapot Wessapan | *Eastern Asia University*

### **ACENS-67593**

#### **A Stereovision-Based Method to Correct Thermography Error Due to Radioactive Reflection**

Po Ting Lin | *Chung Yuan Christian University*

Shu-Ping Lin | *Chung Yuan Christian University*

Yu-Hsien Tu | *Chung Yuan Christian University*

### **ACENS-67969**

#### **Evaluation of Liquid Water Content in Thermal Efficient Heating Mechanism Using Water Vapor for Industrial Furnace**

Seigo Sakai | *Yokohama National University*

### **ACENS-67459**

#### **Life Cycle Costing Model for Estimating and Forecasting Future Budget Needs for Machinery**

Suparatchai Vorarat | *Dhurakij Pundit University*

### **ACENS-67496**

#### **Design Improvement of a Linear Control Solenoid Valve by Using Multiphysics Analysis**

Gee Soo Lee | *Youngsan University*

**ACENS-67460**

**Predictions on Structural and Mechanical Properties of LCP/Nylon 6 Composites by  
Molecular Dynamics Simulation**

Chen-Yun Lin | *National Sun Yat-Sen University*

Shin-Pon Ju | *National Sun Yat-Sen University*

Tien-Jung Huang | *Industrial Technology Research Institute*

Hui-Lung Chen | *Chinese Culture University*

Che-Hsin Lin | *National Sun Yat-Sen University*

Lung-Ming Fu | *National Pingtung University of Science and Technology*

## Communication / Art & Design

Friday, January 20, 2017

13:15-14:45

Room 102

Session Chair: Prof. Seungkoo Kang

---

### ISSSM-3407

#### **Relationships between Working Motivations and Employability of Part-Time Workers - A Case Study of College Students**

Shu-Yi Ho | *Overseas Chinese University*

Yi-Hsin Tsai | *Overseas Chinese University*

### ISSSM-3472

#### **Exploring the Image Restoration Strategies of Japanese Crisis Response Form: A Case Study on Japan Female Celebrity Endorsement**

ShihWei Tein | *National Chengchi University*

### ISSSM-3498

#### **Reconstructing the Aura of the Work of Art in New Media Era: The Case of Film**

Jiefu Li | *National Chengchi University*

Shuzhan Deng | *National Taiwan Normal University*

### ISSSM-3430

#### **The Design for the Visually Impaired People: Chedi of Wat Ratburana, Ayutthaya**

Phiengpit Chagotong | *Burapa University*

### ISSSM-3552

#### **Evaluation of Sound Absorption Performance of Large Lecture Rooms in Public University**

Pasit Leeniva | *King Mongkut's Institute of Technology Ladkrabang (KMITL)*

Prapatpong Upala | *King Mongkut's Institute of Technology Ladkrabang (KMITL)*

### ISSSM-3489

#### **A Study of the Attitudes on Brand Images in Advertising**

Seungkoo Kang | *Korea National Open University*

## **Business & Management (2)**

**Friday, January 20, 2017**

**13:15-14:45**

**Room 107A**

Session Chair: Prof. Jeou-Shyan Horng

---

### **ISSSM-3411**

#### **The Key Factors for Successful Implementation of Lean Management in Hospital**

Wen-Hsiang Lai | *Feng Chia University*

Hsien-Hui Yang | *Feng Chia University*

### **ISSSM-3513**

#### **Fostering Corporate Social Responsibility in Hotel Industry: The Perspective of Technology and Culture Innovation**

Jeou-Shyan Horng | *Jinwen University of Science and Technology*

Da-Chian Hu | *Jinwen University of Science and Technology*

Yu-Chun Chung | *Jinwen University of Science and Technology*

Chang-Yen Tsai | *MingDao University*

Chih-Hsing Liu | *Ming Chuan University*

Sheng-Fang Chou | *Ming Chuan University*

### **ISSSM-3484**

#### **The Process of Research-Project Management with an Umbrella Project to Look after Smaller Member Projects: Case Study of Sakon Nakhon Rajabhat University**

Lamai Romyen | *Sakon Nakhon Rajabhat University*

Wipawan Yaisomboon | *Sakon Nakhon Rajabhat University*

Phassakon Nuntapanich | *Ubon Ratchathani Rajabhat University*

### **ISSSM-3591**

#### **Factors Stimulating Consumers to Impulse Buy by Clicking “Buy Now” Ads on Facebook**

Hsiu-Chia Ko | *Chaoyang University of Technology*

Jia-Hui Chang | *Chaoyang University of Technology*

### **ISSSM-3582**

#### **An Analysis Study on the Management Model for Hair-Design Industries in Taiwan ~ Taking the Differential Strategies ~**

Yu-Huang Ho | *Tatung Institute of Technology*

**ISSSM-3456**

**The Relationship among Ethical Leadership, Organizational Culture, and Corporate Social Responsibility in the Tourism and Hospitality Industry**

Chang-Yen Tsai | *Ming Dao University*

Jeou-Shyan Horng | *Jinwen University of Science & Technology*

Hsuan Hsu | *National Taiwan Normal University*

## **Education (3)**

**Friday, January 20, 2017**

**13:15-14:45**

**Room 107B**

Session Chair: Prof. Peter Firkola

---

### **ISSSM-3657**

#### **A Study of Internationalization Practices at Japanese Universities**

Peter Firkola | *Hokkaido University*

### **ISSSM-3426**

#### **The Meaning of Life Education in Liang Shu-Ming's "Self Accounts"**

Huang Wen-Shu | *Shu Te University*

### **ISSSM-3450**

#### **A Study of Citizenship Education in Provincial Primary Schools in the North East of Thailand**

Sanyasorn Sawasthaisong | *Sakon Nakhon Rajabhat University*

Akkadet Uppachai | *Sakon Nakhon Rajabhat University*

### **ICEEPS-2579**

#### **Toward a Holistic Education: Social Emotional Learning and Vital Issues in Japanese Education**

Arnold F. Arao | *University of Missouri*

### **ICEEPS-2743**

#### **The E-Learning Readiness of Undergraduate Students at Vongchavalitkul University**

Kritsupath Sarnok | *Vongchavalitkul University*

### **ICEEPS-2739**

#### **The Investigation of Receptive Vocabulary Size of Private University Students**

Navinda Sujinpram | *Vongchavalitkul University*



# Electrical and Electronic Engineering (2) / Power & Energy Engineering

Friday, January 20, 2017

13:15-14:45

Room 108A

Session Chair: Prof. The-Nan Chang

---

## ACENS-66721

### **Influence of the Metal-Frame on the Performance of a MIMO Antenna**

The-Nan Chan | *Tatung University*

Kai-Jen Chen | *Tatung University*

## ACENS-66815

### **Non 90 Degree Equal Length Arbitrary Output Power Ratio Branch Line Design**

Chien-Chun Ku | *National Chin Yi University of Technology*

Yong-Han Jiang | *National Chin Yi University of Technology*

Hong-Pu Lin | *National Chin Yi University of Technology*

Jan-Dong Tseng | *National Chin Yi University of Technology*

Wen-Te Wang | *National Chin Yi University of Technology*

## ACENS-68000

### **Design and Fabrication of Microfuses Using X-ray Lithography**

Chitphong Ketthanom | *Vongchavalitkul University*

## ACENS-66799

### **Optimal Generation & Utilization of Renewable Energies for an Enterprise**

Hsiao-Fan Wang | *National Tsing Hua University*

Pei-Wen Chou | *National Tsing Hua University*

## **Biology/ Biotechnology/ Biological Engineering (1)**

**Friday, January 20, 2017**

**13:15-14:45**

**Room 108B**

Session Chair: Prof. Kwang Il Kang

---

### **ACENS-68882**

#### **Convergence Education with Biological Science**

Kwang Il Kang | *Korea Science Academy of KAIST*

### **ACENS-68872**

#### **Effects of Zucchini Yellow Mosaic Virus Infection on the Glutathione and Cysteine Accumulation in Leaves of a Highly Virus Tolerant Zucchini (*Cucurbita pepo* L.)**

Unchalee Ninsuwan | *Phranakhon Rajabhat University*

Maria Mueller | *University of Graz*

### **ACENS-66774**

#### **Rapid Detection of Gene HLA-Cw1602 on Lateral-Flow Strips**

Jui-Chuang Wu | *Chung Yuan Christian University*

Guwan-Tin Lin | *Chung Yuan Christian University*

### **ACENS-67598**

#### **An Image-Based Handheld Flowmeter**

Po Ting Lin | *Chung Yuan Christian University*

Wei-Hao Lu | *Chung Yuan Christian University*

Yu-Hsien Tu | *Chung Yuan Christian University*

### **ICAS-293**

#### **Oryzalin Induction and Identification of Mutant Genes in *Anthrrium andraeanum***

Suphansiri Pohsap | *Walailak University*

Suwit Wuthisuthimethavee | *Walailak University*

Potjamarn Suraninpong | *Walailak University*

## **Social Studies (2)/ Society**

**Friday, January 20, 2017**

**15:00-16:30**

**Room 102**

Session Chair: Prof. Amporn Tamronglak

---

### **ISSSM-3493**

#### **The Study on the Validation of the Social Capital Scale for the Elderly Perceiving**

Minjoo Kim | *Keimyung University*

Eun-Gu, Ji | *Keimyung University*

### **ISSSM-3495**

#### **A Study on the Social Worker's Job Attitudes in Seniors Welfare Center**

Yong Kwang Lee | *Keimyung University*

Eun-Gu, Ji | *Keimyung University*

### **ISSSM-3564**

#### **From Theory to Practice: The (In) Experience of Strategic Workforce Planning in Thailand Public Sector**

Amporn Tamronglak | *Thammasat University*

### **ICEEPS-2693**

#### **Biogas Production from Continuous Anaerobic Co-Digestion of Night Soil and Food Waste**

Peerakan Banjerdki | *Kasetsart University*

Assadawut Khanto | *Kasetsart University*

### **ICEEPS-2724**

#### **Volunteering for Animals: Understanding Interactions between Volunteer Vacationers and Hosts**

Raweewan Proyrungroj | *Suan Sunandha Rajabhat University*

### **ISSSM-3467**

#### **The Analysis of Educational Policy on Sub District Administration: A Case Study of Lord Mayors' Decision-Making, Chiang Mai, Thailand**

Pinsuda Wonganan | *Chiang Mai University*

Lakhana Leucha | *Buak Khang Municipality, Chiang Mai*

## **Business & Management (3)**

**Friday, January 20, 2017**

**15:00-16:30**

**Room 107A**

Session Chair: Prof. Kuo-Ping Lin

---

### **ISSSM-3408**

#### **The Mediator Effect of Perceived Value: Team Identification on Purchase Intention**

Chi-Fu Chen | *Feng Chia University*

Yuan-Shuh Lii | *Feng Chia University*

### **ISSSM-3488**

#### **Exploring Sweepstakes Marketing Strategies in Facebook Brand Fan Pages**

Yoon-Jin Choi | *Yonsei University*

Byeong-Jin Jeon | *Yonsei University*

Hee-Woong Kim | *Yonsei University*

### **ISSSM-3409**

#### **Green Suppliers Selection in TFT–LCD Industry Using $T_w$ Fuzzy Weighted Average**

Kuo-Ping Lin | *Lunghwa University of Science and Technology*

Yu-Ting Lin | *Lunghwa University of Science and Technology*

### **ISSSM-3412**

#### **Applying IPA-Kano Model to Examine the Traditional Chinese Medicine Clinic Satisfaction**

Chien-Chih Wang | *Ming Chi University Of Technology*

Hsin-Hao Chen | *Ming Chi University Of Technology*

Wei-Ting Yu | *Ming Chi University Of Technology*

### **ISSSM-3606**

#### **Protective Financial Policy of Pesantren towards Surrounding Social Changes (Case Study at Modern Islamic Educational Institution of Gontor, Indonesia)**

Syahrudin Sumardi Samindjaya | *University of Darussalam (UNIDA)*

**ISSSM-3672**

**The Impact of Costing for Branding and Business Environment on SMEs Food and Beverage Product in Malaysia**

F. Diana-Rose | *Universiti Putra Malaysia*

M. A. Zariyawati | *Universiti Putra Malaysia*

## Education (4)

Friday, January 20, 2017

15:00-16:30

Room 107B

Session Chair: Prof. Sun A Oh

---

### ICEEPS-2707

#### Learning Strategies through English Reading Lesson

Tassanee Juntiya | *Kasetsart University*

### ICEEPS-2720

#### Epistemological Beliefs, Cognitive Load and Learning Achievement According to the Types of Flipped Learning for Adult Learners

Sun A Oh | *Gwangju University*

Hyo Geun Song | *Chonnam National University*

### ICEEPS-2686

#### Enhancing Academic Writing and Communicative Competence by Using Active Learning Strategies for Non-Native Speakers

Debashrita Ghosh Dastidar | *Osaka University*

### ISSSM-3424

#### "Implementation of Education Based "Panca Jiwa" at Boarding School in the Effort to Create Golden Generation" (Case Study in Modern Islamic Boarding School of Darussalam Gontor Ponorogo, East Java, Indonesia)

Yuwan Ebit Saputro | *University of Darussalam Gontor/ Junior Reseacher CIOS (Centre For Islamic and Occidental Studies)*

Puja Solahudin | *University of Darussalam Gontor/ Junior Reseacher CIOS (Centre For Islamic and Occidental Studies)*

Soritua Ahmad Ramdhani Harahap | *University of Darussalam Gontor/ Junior Reseacher CIOS (Centre For Islamic and Occidental Studies)*

### ISSSM-3510

#### The Implementation of the Practice-Based Entrepreneurship Education—the Ethnonarrative Approach

Stephen, Dun-Hou Tsai | *National Sun Yat-Sen University*

Roy Chih-Yu Lee | *National Sun Yat-Sen University*

Esta, Meng-Chen Wu | *National Sun Yat-Sen University*

**ICEEPS-2741**

**Using Podcasts to Enhance English Listening Comprehension Skill**

Sengchoy Inthachack | *Vongchavalitkul University*

## Civil Engineering (2)

Friday, January 20, 2017

15:00-16:30

Room 108A

Session Chair: Prof. Ming-Lou Liu

---

### ACENS-67471

#### **Numerical Simulation of FRP-Metal Heterojunction and FRP Inter-Laminar Behavior Using Cohesive Element**

Guang-Min Luo | *National Kaohsiung Marine University*

Chia-Hung Kuo | *National Kaohsiung Marine University*

### ACENS-66802

#### **Baseline Analysis on the Measurements from GPS Signals for the Identification of Structural Frequencies**

Chien-Chou Chen | *National Yunlin University of Science & Technology*

Wen-Hwa Wu | *National Yunlin University of Science & Technology*

Ching-Hui Lin | *National Yunlin University of Science & Technology*

### ACENS-67509

#### **The Nonlinear Backcalculation of Pavement and It's Applications for Structural Analysis**

Ming-Lou Liu | *I-Shou University*

Feng-Yin Sun | *Kao-Yuan University*

### ACENS-67463

#### **Review on the Criteria of Roofing Failure**

No-Hyeon Park | *Seoul, Konkuk University*

Jung-Man Park | *Korea Infrastructure Safety Corporation*

Young-Bin Kwon | *Seoul, Konkuk University*

Ho-Jong Kim | *Seoul, Konkuk University*

Jong-Ho Shin | *Seoul, Konkuk University*

### ACENS-68878

#### **Feasibility Study on Using Tuned Mass Damper for Retrofit of 12 Storey Building**

Tsui-Huang Wu | *National Taipei University of Technology*

Shuenn-Yih Chang | *National Taipei University of Technology*

Tsung-Wu Chen | *Kuoichen Engineering Consultant*



**ACENS-67512**

**Performance Assessment Modeling for Selection of Building Exterior Finishing Materials**

Yongdeok Jeon | *Dongguk University*

Jaeseob Lee | *Dongguk University*

Kichang Jeong | *Construction Cost Management Research Institute*

Wooram Kim | *Dongguk University*

## Engineering Technologies

Friday, January 20, 2017

15:00-16:30

Room 108B

Session Chair: Prof. Ping Wu

---

### ICAS-281

#### **Time-Discontinuous Galerkin Method for Coulomb Friction in Nonlinear Vibration**

Rittipol Chantararat | *Rajamangala University of Technology Rattanakosin*

Prapot Kunthong | *Kasetsart University*

### ICAS-350

#### **Numerical Study of Tsunami Propagation in Mentawai Island West Sumatra**

Noverina Alfiany | *Okayama University*

Kazuhiro Yamamoto | *Okayama University*

Masaji Watanabe | *Okayama University*

### ICAS-349

#### **Study on Bird Flu Infection Process within a Poultry Farm with Effects of Spatial Diffusion**

Arrival Rince Putri | *Okayama University*

Masaji Watanabe | *Okayama University*

Tertia Delia Nova | *Andalas University*

### ICAS-351

#### **Numerical Study of Anaerobic Digestion Processes and Biogas Generation from Fruit and Vegetable Waste**

Puteri Kusuma Wardhani | *Okayama University*

Masaji Watanabe | *Okayama University*

### ICAS-272

#### **Synthesis and Characterization of BiV(O, N)<sub>4</sub> Nanoparticles for Improved MB Degradation via LED Light Irradiation**

Ping Wu | *Singapore University of Technology and Design*

Gary Hsing-Huan Ma | *Singapore University of Technology and Design*

Andrei Levedev | *Singapore University of Technology and Design*

Franklin Anariba | *Singapore University of Technology and Design*

## **Social Studies (3)**

**Saturday, January 21, 2017**

**08:45-10:15**

**Room 107A**

Session Chair: Prof. Azila Ahmad Sarkawi

---

### **ISSSM-3479**

#### **An Analytical Study of Malaysia's Quality of Life Indicators**

Azila Ahmad Sarkawi | *International Islamic University Malaysia*

Alias Abdullah | *International Islamic University Malaysia*

Norimah Md. Dali | *International Islamic University Malaysia*

### **ISSSM-3480**

#### **A Critical Review on the Worldwide Economist Intelligence Unit, Mercer and Monocle Quality of Life Indicators**

Azila Ahmad Sarkawi | *International Islamic University Malaysia*

Alias Abdullah | *International Islamic University Malaysia*

Norimah Md. Dali | *International Islamic University Malaysia*

### **ISSSM-3604**

#### **The Strategy of International Non-Governmental Organization (NGO) in Improving the Competitiveness of Economic Maritime: The Case Study of Oxfam's Program on Coastal Restoring Livelihood (CRL) in the District Maros Indonesia.**

Darwis Beddu | *Hasanuddin University*

Aswin Bahar | *Hasanuddin University*

Burhanuddin | *Hasanuddin University*

Munjin Asyari | *Hasanuddin University*

### **ISSSM-3473**

#### **A Study of Organizing Activities to Prevent Violent Confrontations among Vocational Students in Bangkok, Thailand**

Nathaporn Thaijongrak | *Srinakharinwirot University*

Sureeporn Nipithwittaya | *Srinakharinwirot University*

## **Education (5)**

**Saturday, January 21, 2017**

**08:45-10:15**

**Room 107B**

Session Chair: Prof. Chih-Wen Fan

---

### **ICEEPS-2589**

#### **Accountability Leadership: Studies, Practical Roles and School Administrative Implication**

Chih-Wen Fan | *National Dong Hwa University*

Wen-Cheng Chang | *National Dong Hwa University*

### **ISSSM-3448**

#### **A Case Study of the Implementation of Film Appreciation Education by Art Teachers**

Fu-Ju Yang | *Kainan University*

### **ISSSM-3463**

#### **Critical Factors in Excellence Upgrading for University in Thailand**

Boonsang Supapawawisit | *Chulalongkorn University*

Achara Chandrachai | *Chulalongkorn University*

### **ICEEPS-2711**

#### **The Construction of a Virtual Classroom for Problem-Based Learning on Innovation and Education Technology Subject, E-Learning Content for Teacher Student in Suratthani Rajabhat University**

Pichamon Sureeyaphan | *Suratthani Rajabhat University*

### **ISSSM-3516**

#### **The Correlation between Self-Awareness and Students' Learning Style (A Descriptive Study at English Department, Muhammadiyah University of Makassar)**

Silfa Nugrawati | *Muhammadiyah University of Makassar*

Goestina | *Muhammadiyah University of Makassar*

**Information Engineering and Technology (1) / Computer  
Engineering and Technology (2)**

**Saturday, January 21, 2017      08:45-10:15      Room 108A**

Session Chair: Prof. Hsin-Ling Hsieh

---

**ACENS-67543**

**Interdisciplinary Connections of Software Development Education**

Evgeny Pyshkin | *University of Aizu*

**ACENS-66777**

**Identifying Key Quality Service Factors for Traditional Chinese Medicine Clinic**

Chien-Chih Wang | *Ming Chi University Of Technology*

Hsin-Hao Chen | *Ming Chi University Of Technology*

Hsin-Ling Hsieh | *Ming Chi University Of Technology*

**ACENS-66800**

**Anomaly Detection on Cloud Application Based on Service Pattern Statistics**

I-Hsien Liu | *National Cheng Kung University*

Chia-Chun Chang | *National Cheng Kung University*

Jung-Shian Li | *National Cheng Kung University*

**ACENS-67581**

**Forecasting the Inventory Needs for the City Schools Division of Mabalacat  
Using Moving Average and Exponential Smoothing**

Ronilyn M. Telan | *Mabalacat City College*

Mary Ann F. Quioc | *Mabalacat City College*

**ACENS-67478**

**Word Whiz Pets: An Assessment of an Android-Based Game as a Tool in Improving Spelling Proficiency**

Mary Ann F. Quioc | *Mabalacat City College*

Citabel G. Malonzo | *Mabalacat City College*

Mark Paolo M. Cruz | *Mabalacat City College*

Lionel G. De Lazo | *Mabalacat City College*

Ronalyn T. Domingo | *Mabalacat City College*

Darwin M. Miranda | *Mabalacat City College*

Ronilyn M. Telan | *Mabalacat City College*

**ACENS-67592**

**PHOM: Physical Health on Mobile**

Mark Paolo M. Cruz | *Mabalacat City College*

Mary Ann F. Quioc | *Mabalacat City College*

## **Environmental Engineering / Earth Sciences**

**Saturday, January 21, 2017**

**08:45-10:15**

**Room 108B**

Session Chair: Prof. Chomchid Phromsin

---

### **ACENS-67554**

#### **The Influence of Bryophytes' Hygroscopic and Dehumidification on the Living Thermal Environment**

Chih-Hong Huang | *National Taipei University of Technology*

Te-Yu Cheng | *National Taipei University of Technology*

### **ACENS-67978**

#### **Water Quality Index Assessment for Water Quality Trend in U-Tapao Canal Sub-Basin, Southern Thailand**

Suvalee Chuvanich | *Prince of Songkla University*

Panalee Chevakidagarn | *Prince of Songkla University*

Bin HE | *Chinese Academy of Sciences*

Amornrat Phongdara | *Prince of Songkla University*

Krerkchai Thongnoo | *Prince of Songkla University*

### **ACENS-68897**

#### **Simulation of Net Primary Productivity at a Teak Plantation in Northern Thailand under Different Climatic Conditions**

Chomchid Phromsin | *Kasetsart University*

Sakol Satitvityanan | *Kasetsart University*

### **ACENS-67587**

#### **Hybrid Cation Exchanger Impregnated with Hydrated Al(III) Oxide Nanoparticles (HCIX-Al) with Closed-Loop Recyclable Regeneration System**

Chartchai Rungdist | *Khon Kaen University*

Pornsawai Praipipat | *Khon Kaen University*

Surapol Padungthon | *Khon Kaen University*

**ACENS-68934**

**The Evaluation on Water Yield from a Newly Established Forest Developed by PT.  
Newmont Minahasa Raya**

Berty Oktovian Alexander Sompie | *Faculty of Engineering, Sam Ratulangi University  
Manado*

Budi Indra Setiawan | *Bogor Agriculture University*

David Christian Emanuel Sompie | *Faculty of Fishery and Marine Science*

Jerry Kojansow | *Faculty of Fishery and Marine Science*

Hard Napoleon Pollo | *Faculty of Agriculture, Sam Ratulangi University*

Ockstan Jurike Kalesaran | *Faculty of Fishery and Marine Science*



## **Business & Management (4)**

**Saturday, January 21, 2017**

**10:30-12:00**

**Room 107A**

Session Chair: Prof. Hung-Pin Shih

---

### **ISSSM-3337**

#### **Sabah Gastrotourism: Domestic Tourists' Ethnocentrism and Food Neophobia Levels on the Acceptance of Traditional Kadazandusun Food**

Dg. Khairunisa Ahmad Sapawi | *Universiti Malaysia Sabah*

Chiew Shi Ng | *Universiti Malaysia Sabah*

Aizul Azri Azizan | *Universiti Malaysia Sabah*

Yasmin Beng Houi Ooi | *Universiti Malaysia Sabah*

### **ISSSM-3322**

#### **Re-Examining the Review-Product Congruity: The Assessment of Review Helpfulness of Search and Experience Products**

Hung-Pin Shih | *Hsuan Chuang University*

### **ISSSM-3499**

#### **The Influence of User-Generated Content on Travellers' Consumption Behavior: A Systematic Review**

Shuzhan Deng | *National Taiwan Normal University*

Jiefu Li | *National Chengchi University*

### **ISSSM-3402**

#### **The Buffer Management of TOC Demand-Pull Replenishment System for Short Life-Cycle Product**

Duc Nam Ngo | *Minghsin University of Science and Technology*

Shuang Wu | *Zhejiang Hengdian College of Movie & Television*

Sheng-Hung Chang | *Minghsin University of Science and Technology*

### **ISSSM-3501**

#### **The Effect of Attitudes toward Aging on ICT Adoption**

Ju-Chuan Wu | *Feng Chia University*

Chih-Jou Chen | *National Penghu University of Science and Technology*

## Education (6)

**Saturday, January 21, 2017**

**10:30-12:00**

**Room 107B**

Session Chair: Prof. Peter Raymond Whipp

---

### **ICEEPS-2680**

#### **Pedagogical Link Making in Students' Peer Discussions in Science Classes**

Rholeo O. Virata | *De La Salle University Manila*

### **ICEEPS-2729**

#### **Factors Affecting Student Concept Formation towards Planned Action in Environmental Education**

Sheryl Jaud Sombilon | *St. Scholastica's College Manila*

### **ICEEPS-2564**

#### **Analysis of the General Business Risks Faced by Preschools in Taiwan and Their Risk Management**

Yi-Gean Chen | *National University of Tainan*

Jao-Nan Cheng | *National Taitung University*

### **ISSSM-3575**

#### **An Analysis on Implications of Glocalization and Its Challenges to Vocational High Schools**

Mingchang Wu | *National Yunlin University of Science and Technology*

Yuan-Kei Lin | *National Yunlin University of Science and Technology*

Chun-Ling Hung | *Londer Vocational High School*

### **ISSSM-3446**

#### **Commitment to Teaching: Motivators to Remain in the Profession**

Peter Raymond Whipp | *Murdoch University*

Kasper Mäkelä | *University of Jyväskylä*

## Information Engineering and Technology (2) /

### Nanotechnology

**Saturday, January 21, 2017      10:30-12:00      Room 108A**

Session Chair: Prof. Chun-Hung Cheng

---

#### **ACENS-67563**

##### **Latency Reduction Using Cloudlet and Virtual Private Mobile Network for Basic Set Applications in Intelligent Transportation System**

Lionel Nkenyereye | *Dong-Eui University*

Jong-Wook Jang | *Dong-Eui University*

#### **ACENS-66715**

##### **Identification of Risky Chips Based on Data Mining Techniques in Semiconductor Manufacturing**

Young-Seon Jeong | *Chonnam National University*

Byunghoon Kim | *Korea Institute of Science and Technology Information*

#### **ACENS-66819**

##### **An Object Detection Approach for Trolley Monitoring in a Service Facility**

Kwong-Tim Chan | *The Chinese University of Hong Kong*

Chun-Hung Cheng | *The Chinese University of Hong Kong*

Dorbin Tobun Ng | *The Chinese University of Hong Kong*

#### **ICAS-342**

##### **Terahertz Spectroscopy of Nanomaterials via Surface Enhancement**

Luca Razzari | *INRS*

#### **ACENS-67970**

##### **Development of a Smartphone-Based Integrated Water Welfare Service App to Provide Real-Time Water Information**

Yonggil Park | *Inha University*

Kyehyun Kim | *Inha University*

Jungyong Park | *Inha University*

Kihoon Lee | *Inha University*

## **Mechanical Engineering and Technology (2)/ Buildings and Construction**

**Saturday, January 21, 2017      10:30-12:00      Room 108B**

Session Chair: Prof. Cheng-Hung Huang

---

### **ACENS-67466**

**The Wave Attenuation Mechanism of the Local Resonance Metamaterial: Does Band Gap Always Coincide with the Frequency Range of Effective Negative Material Property?**

I-Ling Chang | *National Cheng Kung University*

Zhen-Xian Liang | *National Cheng Kung University*

Hao-Wei Kao | *National Cheng Kung University*

### **ACENS-66813**

**An Inverse Problem in Determining the Design Variables of the Fin Shape for Heat Sinks**

Cheng-Hung Huang | *National Cheng Kung University*

Guan-Jie Wang | *National Cheng Kung University*

### **ICAS-314**

**Resident's Recognition and Intention for Urban Renewal in Historic Area - Example of Hamasen Area in Kaohsiung**

Yun-Yao Chi | *Chang Jung Christian University*

Yung-Lung Lee | *Chang Jung Christian University*

Dai-Ling Li | *Chang Jung Christian University*

### **ICAS-316**

**Application of Hedonic Price Approach for the Effects on the Taiwan Green Building Index to the Residential Real Estate for Urban Multi-Story Residence**

Jung-Fa Cheng | *National Cheng Kung University*

Hsien-Te Lin | *National Cheng Kung University*

Dai-Ling Li | *Chang Jung Christian University*

## Psychology

Saturday, January 21, 2017

13:00-14:30

Room 107A

Session Chair: Pro. Moneera Almeraba

---

### ISSSM-3433

#### **The Effects of Social Support and Self-Esteem on Relations of Anxiety/Depression and Posttraumatic Growth**

Soo-Min Kim | *Chung-Ang University*

Hwiyeol Jo | *Seoul National University*

Jeong Ryu | *Yonsei University*

### ISSSM-3562

#### **Evaluating Corporate Identity in the Offices of Advertising Businesses through Building Users and Design Professionals**

Thana Sirijansawang | *King Mongkut's Institute of Technology Ladkrabang (KMITL)*

Prapatpong Upala | *King Mongkut's Institute of Technology Ladkrabang (KMITL)*

### ISSSM-3434

#### **WordNetwork Graphs in Autobiographical Memories depending on Emotions: Analysis of Nouns with Depression and Affectivity**

Hwiyeol Jo | *Seoul National University*

Soo-Min Kim | *Chung-Ang University*

Jeong Ryu | *Yonsei University*

### ICEEPS-2553

#### **Student Violence Phenomenon at the University of Hail (Features, Causes and Suggested Solutions)**

Moneera Almeraba | *University of Hail*

### ICEEPS-2712

#### **The Effect of Autonomy Support from University Political Instructors in China**

Juming Jiang | *Doshisha University*

Ayumi Tanaka | *Doshisha University*

**ICEEPS-2744**

**The Influence of Layouts on Visual Impression - Comparing 12 Flyer Layout Patterns**

Yutaka Andoh | Japan Advanced Institute of Science and Technology

Kengo Omura | Fuji Xerox

Kentaro Takano | Fuji Xerox

Koushi Kawamoto | Fuji Xerox

Tsutomu Fujinami | Japan Advanced Institute of Science and Technology

## Materials Science and Engineering (2)/ Materials

Saturday, January 21, 2017

13:00-14:30

Room 108A

Session Chair: Prof. Jin Oh Chung

---

### ICAS-345

#### **Role of Lubricating Component MoS<sub>2</sub> in NAO Friction Material**

Jin Oh Chung | *Sunchon University*

Sang Ryul Go | *Sunchon University*

Jeong Hee Kim | *Sunchon University*

Jong Geun Choi | *Sunchon University*

Hyang Rae Kim | *Frixa Co. Ltd*

Hee Bum Choi | *Frixa Co. Ltd*

Chan Kyoung Park | *Frixa Co. Ltd*

### ICAS-271

#### **Effect of Surface Treatment of Soft-Magnetic Carbonyl Iron on Magnetorheological Characteristics of Its Elastomer Composite**

Hyoung Jin Choi | *Inha University*

### ICAS-333

#### **Investigation on the Effects of PSS Loading on PEDOT:PSS/MWCNTs Composite for Thermoelectric Application**

May Thu Zar Myint | *Okayama University*

Karthik PS | *Okayama University*

Zaw Lin | *Okayama University*

Venkata Krishna Rao R | *Okayama University*

Venkata Abhinav K | *Okayama University*

Takuma Hayashi | *Okayama University*

Hiroataka Inoue | *Okayama University*

Takeshi Nishikawa | *Okayama University*

Masaki Hada | *Okayama University*

Yasuhiko Hayashi | *Okayama University*

**ACENS-67615**

**Comparison Study on Properties of Ethylene Vinyl Acetate / Carbonized Wood Fiber and Ethylene Vinyl Acetate / Carbon Black Conductive Polymer**

Mohd Hanif Mohd Pital | *Universiti Malaysia Perlis (UniMAP)*

A. G. Supri | *Universiti Malaysia Perlis (UniMAP)*

A. R. Rozyanty | *Universiti Malaysia Perlis (UniMAP)*

S. J. Tan | *Universiti Malaysia Perlis (UniMAP)*

**ACENS-67589**

**Lead Removal from Drinking Water and Industrial Wastewater Using a Reusable Adsorbent Containing Iron Oxide Nanoparticles**

Pornsawai Praipipat | *Khon Kaen University*

Nopphorn Chanthapon | *Khon Kaen University*

Surapol Padungthon | *Khon Kaen University*



## Biological Engineering

Saturday, January 21, 2017

13:00-14:30

Room 108B

Session Chair: Prof. Jonathan Juin-Jen Cheng

---

### ACENS-67603

#### **Dexterous Hand Control through Fascicular Targeting (HAPTIX-DEFT)**

Jonathan Juin-Jen Cheng | *University of Texas Southwestern Medical Center*

Edward Keefer | *Nerves Incorporated*

### ACENS-66798

#### **Stress States and Compaction Properties of Sandy Loam Soil under Tractive Tire**

Prathuang Usaborisut | *Kasetsart University*

Dithaporn Thungsotanon | *Kasetsart University*

Pramote Kuson | *King Mongkut's Institute of Technology Ladkrabang, Prince of Chumphon  
Campus*

### ACENS-67973

#### **Effect of Inlet-Outlet Air Temperature and Maltodextrin Content on Skimmed Coconut Milk Spray Drying**

Jaruwan Duangchuen | *Kasetsart University*

Siwalak Pathaveerat | *Kasetsart University*

Pilaiwan Jermwongratanachai | *Kasetsart University*

### ACENS-67483

#### **Effects of Gang Angle and Speeds on Covering Efficiency and Power Consumption of a Trash Covering Powered Disc**

Sirisak Choedkiatphon | *Kasetsart University*

Prathuang Usaborisut | *Kasetsart University*

## ***Poster Session (1)***

---

**Computer Engineering and Technology / Computer  
Technologies / Information Engineering and Technology /  
Engineering Technologies / Agricultural Engineering and  
Technologies / Nanotechnology / Ocean Technologies /  
Robotics / Electrical and Electronic Engineering (1)**

**Thursday, January 19, 2017      13:30-14:30      Room 101**

---

### **ACENS-67481**

**A Phenotype-Knowledge-Based Variant Analysis Tool for the Discovery of  
Rare-Disease-Causing-Genes**

Jaemoon Shin | *Hallym University*

Jinhwa Kong | *Hallym University*

Jungim Won | *Hallym University*

Jeehee Yoon | *Hallym University*

Unjoo Lee | *Hallym University*

### **ACENS-67482**

**Whole Exome Sequencing Data Analysis Pipeline for the Discovery of  
Rare-Disease-Causing-Genes**

Yunyoung Choi | *Hallym University*

Jaemoon Shin | *Hallym University*

Jinhwa Kong | *Hallym University*

Jeehee Yoon | *Hallym University*

Keonbae Lee | *Kyonggi University*

**ACENS-67584**

**Evaluation of Speech Imitation Using Bayesian Network**

Yeou-Jiunn Chen | *Southern Taiwan University of Science and Technology*

Zih-Wei Wang | *Southern Taiwan University of Science and Technology*

Jiunn-Liang Wu | *National Cheng Kung University*

Shih-Chung Chen | *Southern Taiwan University of Science and Technology*

Chung-Min Wu | *Kun Shan University*

**ACENS-67971**

**Using Social Interactions Network Graph and Centrality to Identify Key Players**

Worapol Alex Pongpech | *Dhurakijpundit University*

**ACENS-67962**

**Automatic Recognition of Analog Gauge's Scale for Smart Factory**

Jinkyu Ryu | *Chonbuk National University*

Kyehyun Lee | *Chonbuk National University*

Young-Tae Kwak | *Chonbuk National University*

**ACENS-68875**

**A Study on File Conversion between SCP-ECG and MFER Format**

Sunho Kim | *Halla University*

Kangwoo Lee | *Halla University*

Yonghee Lee | *Halla University*

**ICAS-326**

**Utilize Text Mining Techniques to Explore Trends of Biomedical Publications Based on Taiwan National Health Insurance Research Database**

Mei-Hsien Lee | *University of Taipei*

Charlotte Wang | *Tamkang University*

Jyun-Fan Peng | *University of Taipei*

Sung-Chiang Lin | *National Taipei University of Education*

**ACENS-67521**

**Refine of Application Pre-Loading Pattern Using Access Points**

Hyo-Joong Suh | *The Catholic University of Korea*

### **ICAS-280**

#### **Modeling the Composite Support System Consisted of Retaining Wall, Reinforced Concrete Roof and Pipe Umbrella Roof**

Shuli Wang | *China University of Geosciences*

Mangen Mu | *Shanxi Institute of Technology*

### **ICAS-286**

#### **Structural Optimization Design Based on the Phase Field Method for Microwave Applications**

Hyundo Shin | *Yonsei University*

Sangyeub Lee | *Yonsei University*

Jeonghoon Yoo | *Yonsei University*

### **ICAS-347**

#### **Generating of 2×1 Outputs for Radially and Azimuthally Polarized Beams**

Wei-Xuan Wu | *Feng Chia University*

Chien-Yuan Han | *National United University*

Zhi-Hao Wei | *Feng Chia University*

Chin-Yi Chen | *Feng Chia University*

Kun-Huang Chen | *Feng Chia University*

Chien-Hung Yeh | *Feng Chia University*

Jing-Heng Chen | *Feng Chia University*

### **ICAS-339**

#### **Using Ytterbium Fiber Based Interference Filter for Stable and Selectable Erbium Fiber Laser for WDM Communications**

Ning Tsai | *Feng Chia University*

Yuan-Hong Zhuang | *Feng Chia University*

Chien-Hung Yeh | *Feng Chia University*

Jing-Heng Chen | *Feng Chia University*

Chin-Yi Chen | *Feng Chia University*

C. W. Chow | *National Chiao Tung University*

**ICAS-291****An AGV-Based Automatic Feeding System for Cattle Sheds**

Ji-Hun Yu | *Kyungpook National University*

Seung-Gi Kim | *Kyungpook National University*

Sung-Su Ahn | *Daegu Mechatronics & Materials Institute*

Eung-Yul Kim | *Sesung*

Sang-Heon Choi | *Hana Mecatec*

Yun-Jung Lee | *Kyungpook National University*

**ICAS-323****Development of Soy-Based Beverage Blended with Riceberry Rice Flour**

Ulisa Pachekreapol | *Srinakharinwirot University*

Natcha Srithawatsuwan | *Srinakharinwirot University*

**ICAS-290****Modified Atmosphere Container of Fresh Produce Adaptively Responding to Respiration Change under Dynamic Temperature Conditions**

Ji Hye Lee | *Kyungnam University*

Duck Soon An | *Kyungnam University*

Dong Sun Lee | *Kyungnam University*

**ICAS-283****Comparative Study on the Physical Properties of Some Edible Mushrooms Dehydrated by Hot Air Drying and Vacuum Drying**

Phisut Naknaen | *Srinakharinwirot University*

Sarinya Sangkasanya | *Rajamangala University of Technology Thanyaburi*

Krittaporn Chaisayan | *Srinakharinwirot University*

Nichanun Kiattiphattananukul | *Srinakharinwirot University*

**ICAS-362****Partial Replacement of Soybean Meal and Wheat Flour with Distillers Dried Grain in the Diet for Growth of Juvenile Carp (*Cyprinus carpio* L.)**

Sang Min Lee | *Gangneung-Wonju National University*

**ICAS-273****Effects of Heat Treatment Time on Formation of Black TiO<sub>2</sub> Nanowire Arrays**

Chih-Chieh Wang | *Feng Chia University*

Po Hsun Chou | *Feng Chia University*

Jhe-Wei Lin | *Feng Chia University*

**ICAS-354**

**Control of 1-D Tungsten Oxide Thin Film Nanostructures by Aerosol Flame Deposition Process**

Jin-Rui Ding | *Kangwon National University*

Sang-Hyeok Yoon | *Kangwon National University*

Kyo-Seon Kim | *Kangwon National University*

**ICAS-329**

**Systematic Design of A Plasmonic Grating Coupler**

Hong Kyoung Seong | *Yonsei university*

Jeonghoon Yoo | *Yonsei university*

**ICAS-302**

**Introducing Jang's DRP Method Applied to Water Waves**

Jinsoo Park | *Pusan National University*

Taek Soo Jang | *Pusan National University*

**ICAS-304**

**A Cable-Driven Hand Rehabilitation System for Task-Oriented Therapy of Post-Stroke Patients**

Yun-Keun Park | *Kyungpook National University*

Young-Sang Lee | *Kyungpook National University*

Yong-Chan Lee | *Kyungpook National University*

Yun-Jung Lee | *Kyungpook National University*

**ICAS-368**

***In Vitro* Engineered Mucosal Cell Sheets Using Human Oral Mucosa**

Jong-Lyel Roh | *University of Ulsan*

Hyejin Jang | *University of Ulsan*

**ACENS-67562**

**Temperature-Difference Flow Sensor Using Multiple FBGs**

Joonhwan Shim | *Korea Maritime & Ocean University*

## *Poster Session (2)*

---

### **Education (1) / Society (1) / Social Studies**

**Thursday, January 19, 2017**

**15:00-16:00**

**Room 101**

---

#### **ICEEPS-2572**

##### **Effectiveness of Teaching Experiment with Number Line Animation Representations on Addition and Subtraction Calculations of Second Graders**

Chia-Huang Chen | *National Taichung University of Education*

#### **ICEEPS-2578**

##### **Applying Program Theory-Driven Evaluation to Design, Implement and Evaluate Geography Learning Community Program**

Su-Ching Lin | *National Changhua University of Education*

Ming- Sui Wu | *Ming-Chuan University*

#### **ICEEPS-2599**

##### **Performance Evaluation in Adolescents with Intellectual Disability and the Typically-Developed via Self-Developed Smart Soccer**

Yan-Ying Ju | *National Taiwan Sport University*

Wann-Yun Shieh | *Chang Gung University*

Yu-Chun Yang | *Chang Gung University*

Man-Ting Wong | *Chang Gung University*

Yu-Chun Yu | *National Taoyuan Special School*

Hsin-Yi Kathy Cheng | *Chang Gung University*

#### **ICEEPS-2654**

##### **Work-Related Musculoskeletal Disorders & Assistive Device Using Situation of Special Education Teachers & Teacher' Aides**

Man-Ting Wong | *Chang Gung University*

Yan-Ying Ju | *National Taiwan Sport University*

Yu-Chun Yu | *National Taoyuan Special School*

Hsin-Yi Kathy Cheng | *Chang Gung University*

**ICEEPS-2657**

**An Assessment of Manpower Development Corresponding to Workforce Needs in Early Childhood Care and Education in Taiwan's Vocational Schools**

Li-Tuan Chou | *National Taiwan Normal University*

Mei-Tzu Chen | *National Taiwan Normal University*

**ICEEPS-2605**

**Organizational Climate and Job Satisfaction of Employees in Government Saving Bank Comparable of General Branch and Department Store Branch in Northeastern Region of Thailand**

Atchara Lanumtieang | *Kasetsart University*

Chattawat Limpsurapong | *Kasetsart University*

Krittapong Watcharanukul | *Kasetsart University*

**ICEEPS-2606**

**Organizational Capability and Firm Performance: A Case Study of Export Food Businesses in Thailand**

Anupong Vaingchai | *Kasetsart University*

Chattawat Limpsurapong | *Kasetsart University*

**ICEEPS-2607**

**The Influence of Quality of Working Life Affecting to Firm Performance through Organizational Commitment: A Case Study of Hired Sewers of Garment**

Choomit Premudom | *Kasetsart University*

Chattawat Limpsurapong | *Kasetsart University*

**ICEEPS-2608**

**Human Capital Competency and Firms Performance: A Case Study from Resort Business in Thailand**

Narongthorn Duangchai | *Kasetsart University*

Chattawat Limpsurapong | *Kasetsart University*

**ICEEPS-2609**

**Organizational Communication Strategy and Firm Performance: Evidence from 4-5 Star Hotel Business in Thailand**

Naruphat Todkuy | *Kasetsart University*

Chattawat Limpsurapong | *Kasetsart University*



### **ICEEPS-2610**

#### **Factors Affecting the Wholesale Purchaser's Intention of Plastic Goods Shop in Sakon Nakhon, Thailand**

Nunnapat Pitchayakongkiat | *Kasetsart University*

Chattawat Limpsurapong | *Kasetsart University*

Worrawit Kultangwatana | *Kasetsart University*

### **ICEEPS-2611**

#### **Factors Affecting the Wholesale Purchaser's Intention of Jewelry in Lao People's Democratic Republic**

Phoyphaylin Phetsinorath | *Kasetsart University*

Chattawat Limpsurapong | *Kasetsart University*

Jitpisut Bubphapant | *Kasetsart University*

Onuma Taeporamasamai | *Kasetsart University*

### **ICEEPS-2612**

#### **The Influence of Leadership Affecting Staff Performance through Motivation and Organizational Commitment: A Case Study of Bangkok Bank Public Company Limited, Thailand**

Premwisa Kanjumba | *Kasetsart University*

Chattawat Limpsurapong | *Kasetsart University*

### **ICEEPS-2614**

#### **Perceived Organizational Support and Organizational Culture Affect on Firm Performance from Employees of Nakhon Phanom University**

Thicharkorn Sabsomboon | *Kasetsart University*

Chattawat Limpsurapong | *Kasetsart University*

### **ICEEPS-2616**

#### **Factors Affecting the Wholesale Purchaser's Intention of I-Station, Savannakhet Province, Lao People's Democratic Republic**

Visit Phetsynorath | *Kasetsart University*

Jitpisut Bubphapant | *Kasetsart University*

Onuma Taeporamasamai | *Kasetsart University*

Chattawat Limpsurapong | *Kasetsart University*

**ICEEPS-2618****Factors Influencing Consumers' Purchase Decision of Indigo-Dyed Fabrics in Thailand**

Kanyapeach Rattanakiattikan | *Kasetsart University*

Kullanun Sripongpun | *Kasetsart University*

**ICEEPS-2619****Factors Influencing Marketing Mix of Customers' Purchasing on Gold Ornament in Thailand**

Jamaree Sriboonyong | *Kasetsart University*

Kullanun Sripongpun | *Kasetsart University*

**ICEEPS-2620****Factors Influencing Marketing Mix of a Housing Estate Business in Sakon Nakhon Province, Thailand**

Napapach Thanyaboonyaporn | *Kasetsart University*

Kullanun Sripongpun | *Kasetsart University*

Sirinna Khamtanet | *Kasetsart University*

Tanin Tirasawasdichai | *Kasetsart University*

**ICEEPS-2621****Factors Affecting Service Marketing Mix of Used Car Business in SakonNakhon Province, Thailand**

Rujira Ratanakeardthikarn | *Kasetsart University*

Kullanun Sripongpun | *Kasetsart University*

**ICEEPS-2622****Factors Affecting Service Marketing Mix of Buffet Restaurant Business in Thailand**

Siraprapa Laopanich | *Kasetsart University*

Kullanun Sripongpun | *Kasetsart University*

**ISSSM-3588****The Benefit and Implementation of School-Based Intervention Program for Obese Adolescents in Korean**

Deok-Jin Kim | *Namseoul University*

Yong-Taek Rhim | *Namseoul University*

**ISSSM-3462**

**The Effectiveness of Smoking Cessation Program among People in Huaybong  
Sub-District, Mueang District, Chaiyaphum Province**

Sumalee Punyakam | *Chaiyaphum Rajabhat University*

Phanthippha Bunset | *Mueang District Health Office*

Phagamas Sutithiwanich | *Chaiyaphum Hospital*

## Poster Session (3)

---

### Materials Science and Engineering (1) / Materials

Friday, January 20, 2017

09:30-10:30

Room 101

---

#### ACENS-67542

##### Effect of Isomorphous and Eutectoid Type $\beta$ Stabilizer Elements on Microstructure and Mechanical Properties of Ti Alloys

Arisa Nakao | *Ehime University*

Sengo Kobayashi | *Ehime University*

Keisuke Manabe | *Kobe Steel, Ltd.*

#### ACENS-67505

##### Effect of Chromium Addition on Precipitation of Cu-Particle in Ferritic Stainless Steels

Daisuke Yamanaka | *Ehime University*

Sengo Kobayashi | *Ehime University*

Jun-Ichi Hamada | *Nippon Steel & Sumikin Stainless Steel Corporation*

Norihiro Kanno | *Nippon Steel & Sumikin Stainless Steel Corporation*

#### ACENS-67441

##### Anisotropic Nonlinear Responsive Liquid Crystal for All-Optical Elements Applications

Tsung-Hsien Lin | *National Sun Yat-Sen University*

#### ACENS-67446

##### The Residual Stress Control of the Fastening Bolt for Bridges

Takanori Ebata | *Tohoku Bolt MFG.*

Hitoshi Yokota | *Ibaraki University*

Tetsuya Suzuki | *Ibaraki University*

#### ACENS-67552

##### Properties of Electrochromic Thin Film with a Ta<sub>2</sub>O<sub>5</sub> Protective Layer

Jui-Yang Chang | *National Sun Yat-Sen University*

Ying-Chung Chen | *National Sun Yat-Sen University*

Chih-Ming Wang | *Cheng Shiu University*

Chih-Yu Wen | *National Sun Yat-Sen University*

Chien-Chung Hsu | *National Sun Yat-Sen University*

**ACENS-66809**

**The Study on Synthesis and Thermal Properties of Biodegradable Polyurethanes Nanocomposite Containing Nanoparticles-Decorated Graphene**

Cheng-Lung Wu | *National Taiwan University of Science and Technology*

Shih-Hsuan Chiu | *National Taiwan University of Science and Technology*

Maw-Cherng Suen | *Nanya Institute of Technology*

**ACENS-68874**

**Effect of Thermal Annealing on Electrochemical Behaviors of ZIF-Based Sulfur Composite Electrode for Li Secondary Cells**

Jin-Young Hong | *Pusan National University*

Seok Kim | *Pusan National University*

**ACENS-68873**

**Characterization of Graphene Composite Embedded Manganese Dioxide Nanoparticles for Supercapacitor Electrode**

Sang-Chul Byun | *Pusan National University*

Seok Kim | *Pusan National University*

**ACENS-67508**

**Al<sub>2</sub>O<sub>3</sub> Addition and Low Temperature Co-Fired Behavior with Ag Electrode in a CaO-Al<sub>2</sub>O<sub>3</sub>-B<sub>2</sub>O<sub>3</sub>-SiO<sub>2</sub> Glass**

Pin-Yi Chen | *Ming Chi University of Technology*

Kuei-Chih Feng | *Ming Chi University of Technology*

Cheng-Sao Chen | *Hwa Hsia University of Technology*

Ying-Hsin Chen | *Ming Chi University of Technology*

Pei-Ying Wong | *Ming Chi University of Technology*

Chi-Shun Tu | *Fu Jen Catholic University*

**ACENS-67468**

**Structural Characteristics and Large Electric-Field-Induced Strains in 92.5% (Bi<sub>0.5</sub>Na<sub>0.5</sub>)TiO<sub>3</sub>-7.5%BaTiO<sub>3</sub> Crystals Co-Doped with SrO and MnO<sub>2</sub> Additives**

Cheng-Sao Chen | *Hwa Hsia University of Technology*

Pin-Yi Chen | *Ming Chi University of Technology*

Yi-Ping Syu | *Ming Chi University of Technology*

Kuei-Chih Feng | *Ming Chi University of Technology*

Chi-Shun Tu | *Fu Jen Catholic University*

**ACENS-67498**

**Mechanical Properties of MgO Matrix Utilizing Vermiculite and Diatomite**

OhHan Gwon | *Hanbat National University*

SangSoo Lee | *Hanbat National University*

**ACENS-66810**

**Phase Evolution and Dielectric Characteristics of Mg (Ta<sub>1-x</sub>Nb<sub>x</sub>)<sub>2</sub>O<sub>6</sub> (x=0–0.16) Ceramics at Microwave Frequencies**

Jihh-Yong Chen | *National Cheng Kung University*

Cheng-Liang Huang | *National Cheng Kung University*

**ACENS-67479**

**Hydroxyapatite Preparation from Oyster Shell Waste through Solid-State Reactions**

Wen-Fu Ho | *National University of Kaohsiung*

Hsueh-Fang Wang | *Hungkuang University*

Hsueh-Chuan Hsu | *Central Taiwan University of Science and Technology*

Shih-Ching Wu | *Central Taiwan University of Science and Technology*

Shih-Kuang Hsu | *Central Taiwan University of Science and Technology*

**ACENS-67558**

**Reducing-Resistant Behavior of CaMgSi<sub>2</sub>O<sub>6</sub> Glass-Ceramics under Reducing Atmosphere**

Kuei-Chih Feng | *Ming Chi University of Technology*

Pin-Yi Chen | *Ming Chi University of Technology*

Cheng-Sao Chen | *Hwa Hsia University of Technology*

Chi-Shun Tu | *Fu Jen Catholic University*

**ACENS-67588**

**The Preparation of LaGaNiO<sub>3</sub> Particles by Oxalate Solvent Method and Photocatalytic Water Splitting for H<sub>2</sub> Production under Ultraviolet-Light Irradiation**

Tzu Hsuan Chiang | *National United University*

Kai-Chen Weng | *National United University*

**ACENS-67627**

**Plastic-Chip-Based Magnetophoretic Immunoassay for Point-of-Care Diagnosis of Tuberculosis**

Jeonghyo Kim | *Pusan National University*

Junyoung Kwon | *Pusan National University*

Jaewook Lee | *Shizuoka University*

Syed Rahin Ahmed | *Shizuoka University*

Enoch Y. Park | *Shizuoka University*

Jaebom Lee | *Pusan National University*

**ACENS-67628**

**Ligand Exchange to Reach Biocompatible Magnetic Iron–Nickel Nanocrystals**

Junyoung Kwon | *Pusan National University*

Jeonghyo Kim | *Pusan National University*

Jaewook Lee | *Shizuoka University*

Syed Rahin Ahmed | *Shizuoka University*

**ACENS-67577**

**High Performance Supercapacitor from 3D Framework Structure of Graphene Aerogel/Silver Nanocomposite**

Paphinwit Thammasaroj | *Chulalongkorn University*

Weerapong Nuanwat | *Chulalongkorn University*

Prasit Pattanauwat | *Chulalongkorn University*

Pranut Potiyaraj | *Chulalongkorn University*

**ACENS-67549**

**Electrical and Mechanical Properties of Antistatic Graphene/PLA Composites Prepared by Compression Molding**

Patsarut Panichpairoj | *Chulalongkorn University*

Pattaraporn Juntipwong | *Chulalongkorn University*

Prasit Pattanauwat | *Chulalongkorn University*

Pranut Potiyaraj | *Chulalongkorn University*

**ACENS-67527**

**Properties of FDM 3D-Printed Bioplastic Artifacts**

Aphiwat Pongwisuthiruchte | *Chulalongkorn University and Center of Excellence on Petrochemical and Materials Technology*

Prasit Pattananuwat | *Chulalongkorn University*

Pranut Potiyaraj | *Chulalongkorn University*

**ACENS-67530**

**Fabrication of Micro-Structured CIGS Solar Cells through Annealing CIG Precursor**

Jae-Kwan Sim | *Chonbuk National University*

San Kang | *Chonbuk National University*

Uddipta Chatterjee | *Chonbuk National University*

Dae-Young Um | *Chonbuk National University*

Seung-Kyu Lee | *Chonbuk National University*

Taek-Soo Jang | *Chonbuk National University*

Jun-Yong Jo | *Chonbuk National University*

Hyeon-Un Kim | *Chonbuk National University*

Suel Lee | *Chonbuk National University*

Cheul-Ro Lee | *Chonbuk National University*

**ACENS-67533**

**Epitaxial Growth of  $\text{Al}_x\text{Ga}_{1-x}\text{N}$  Nanowires for Deep Ultraviolet Optoelectronics Using Metalorganic Chemical Vapor Deposition**

San Kang | *Chonbuk National University*

Uddipta Chatterjee | *Chonbuk National University*

Dae Young Um | *Chonbuk National University*

Jae-Kwan Sim | *Chonbuk National University*

Seung Kyu Lee | *Chonbuk National University*

Taek Soo Jang | *Chonbuk National University*

Jun-Yong Jo | *Chonbuk National University*

Hyeon Kim | *Chonbuk National University*

Suel Lee | *Chonbuk National University*

Cheul Ro Lee | *Chonbuk National University*



### **ACENS-67535**

#### **Fabrication of Hybrid Nanostructure Comprising Uniaxial and Coaxial InGaN/GaN MQWs on n-GaN Nanowires**

Dae-Young Um | *Chonbuk National University*

Uddipta Chatterjee | *Chonbuk National University*

San Kang | *Chonbuk National University*

Jae-Kwan Sim | *Chonbuk National University*

Seung-Kyu Lee | *Chonbuk National University*

Taek-Soo Jang | *Chonbuk National University*

Jun-Yong Jo | *Chonbuk National University*

Hyeun Kim | *Chonbuk National University*

Suel Lee | *Chonbuk National University*

Cheul-Ro Lee | *Chonbuk National University*

### **ACENS-67536**

#### **Performance of Hydrogen Generation Using Coaxial InGaN/GaN MQWs Structure Formed on Uniquely Grown Hollow n-GaN Nanowires**

Dae-Young Um | *Chonbuk National University*

Uddipta Chatterjee | *Chonbuk National University*

San Kang | *Chonbuk National University*

Jae-Kwan Sim | *Chonbuk National University*

Seung-Kyu Lee | *Chonbuk National University*

Taek-Soo Jang | *Chonbuk National University*

Jun-Yong Jo | *Chonbuk National University*

Hyeun Kim | *Chonbuk National University*

Suel Lee | *Chonbuk National University*

Cheul-Ro Lee | *Chonbuk National University*

### **ICAS-277**

#### **Analysis of Antioxidative Activities of Onion (*Allium cepa*. L) Cultivars**

Young Il Park | *Sookmyung Women's University*

Soon Young Choi | *Sookmyung Women's University*

Nami Joo | *Sookmyung Women's University*

### **ICAS-282**

#### **Effect of Biodegradation on Some Properties of Poly (lactic acid)/poly (methyl methacrylate-co-ethyl acrylate) Blend**

Nawadon Petchwattana | *Srinakharinwirot University*

**ICAS-322**

**Thermal Degradation Behavior of Biphenyl Based Liquid Crystalline Epoxy Composites with Boron Nitride**

Seung Hyun Cho | *Soongsil University*

**ICAS-278**

**Research on Power Conversion System with Wide Band Gap Semiconductor for Railway System**

Byoung-Hee Lee | *Hanbat National University*

## Poster Session (4)

---

**Business & Management / Finance & Accounting & Banking /**

**Education (2) / Literature and Linguistics**

**Friday, January 20, 2017**

**11:00-12:00**

**Room 101**

---

**ISSSM-3419**

**A Matrix Model for Effective of Project Management**

Yuan-Ho Chen | *Lunghwa University of Science and Technology*

**ISSSM-3333**

**The Effects of Apprenticeship Functions and Self-Efficacy on Workplace Withdraw among New Employees**

Yifen Liu | *National Kaohsiung First University of Science and Technology*

**ISSSM-3504**

**A Preliminary Hospital Management Study on the Performance Evaluation of Different Ownership Hospitals in Taiwan**

Ming-Shu Chen | *Oriental Institute of Technology*

Chao-Chung Ho | *Nanfang College of Sun Yat-Sen University*

**ISSSM-3514**

**Injecting Insider Attacks for Cloud-Based Security Assessment**

Tsung-Ju Lee | *National Penghu University of Science and Technology*

Sung-Chiang Lin | *National Taipei University of Education*

Chiun-How Kao | *Institute for Information Industry*

Ching-Hao Mao | *Institute for Information Industry*

**ISSSM-3483**

**Simplified Linear Programming Formulation for Assessing Greenhouse Gas Reduction Policies in the Transportation Sector**

Hugon Kim | *Kyungsung University*

Young-Hwan Ahn | *Korea Energy Economics Institute*

Yongjoo Chung | *Busan University of Foreign Studies*

Chunhyun Paik | *Donggeui University*

**ISSSM-3470**

**Consumer Adoption Decisions in Service Innovation: The Case of the Uber's Ride-Sharing Service**

Chih-Jou Chen | *National Penghu University of Science and Technology*

**ISSSM-3391**

**A Case Study in Applying Big Data to Analyze the English Vocabulary Used in College Entrance Examinations of Taiwan**

Cheng-Xi Yang | *University of China Technology*

Ming-Cheng Chuang | *University of China Technology*

Pe-Te Chen | *University of China Technology*

Gwo-Jiun Liaw | *University of China Technology*

**ISSSM-3429**

**A Novel Evolution Optimization for Supply Chain Management**

Shih-Chang Wang | *Lunghwa University of Science and Technology*

Samuel Y. Ruan | *Lunghwa University of Science and Technology*

**ISSSM-3507**

**The Valuation, Incentive Effects and Exercise Policies of Executive Stock Options**

Li-Jiun Chen | *Feng Chia University*

**ISSSM-3579**

**Peer Climate in Doctoral Music Student's Socialization**

Skowrung Saibunmi | *Mahidol University*

**ISSSM-3587**

**The Ideal Thailand Music Graduates in the 21<sup>st</sup> Century**

Saya Thuntawech | *Mahidol University*

**ISSSM-3465**

**A Longitudinal Study of Students' Learning Efficiency: A Cohort Study from a University in Taiwan**

Hung-Yi Lu | *Fu Jen Catholic University*

Wei-Ren Chen | *Fu Jen Catholic University*

**ISSSM-3601****A Study on the Effects of Early Childhood Teacher's Basic Psychological Needs, Internal Locus of Control, Self-Efficacy on Self-Leadership**

Yoonhee Seo | *Singu University*

Yongmi Go | *Soonchunhyang University*

Jonghoon Kim | *Soonchunhyang University*

Yunmi Shin | *Ewha Womans University*

**ISSSM-3551****The Effect of Integration of Technology and Post-Task Activities on Language Learning Outcomes**

Chih-Chung Chu | *Lunghwa University of Science and Technology*

Yu-Ying Chang | *National Taiwan University of Science and Technology*

**ISSSM-3455****Data Scattering and Clustering by Data Visualization: A Case Study of the Score Data of University Entrance Exam**

Hung-Yi Lu | *Fu Jen Catholic University*

Jen-Yin Chao | *Fu Jen Catholic University*

**ISSSM-3603****A Research Study on the Sub Factors of Self-Leadership and Happiness that Have an Effect on the Teacher's Intention of Teaching of Childcare Center Teachers**

Yongmi Go | *Soonchunhyang University*

Jonghoon Kim | *Soonchunhyang University*

Sungju Kim | *Soonchunhyang University*

**ISSSM-3453****Stakeholders' Time Horizons and Corporate Social Performance: Evidence from Natural Experiments**

Cuili Qian | *City University of Hong Kong*

Louise Yi Lu | *Australian National University*

Yangxin Yu | *City University of Hong Kong*

**ICEEPS-2597****The Relationship between Cognitive Load and Learning Anxiety with Using English Textbooks at Foreign Language Department of Vocational Colleges**

Hsiu-Te Sung | *National Taiwan Normal University*

Tun-Yi Cheng | *National Taiwan Normal University*

Mei-Tzu Chen | *National Taiwan Normal University*

**ICEEPS-2663****Developing the Sport Sepaktakraw by Innovative Programs Designed by Computer**

Suppawan Vongsrangsap | *Kasetsart University*

Mayuree Tanomsuk | *Kasetsart University*

Tharin Kanlueng | *Kasetsart University*

Kultida Maopech | *Kasetsart University*

Komgrich Choupanich | *Kasetsart University*

Bandit Thiapthong | *Kasetsart University*

**ICEEPS-2664****Vocational Teachers' Perception on Professional Development Programs for Students with Intellectual Disabilities**

Youngsim Kang | *Pusan National University*

Somi Kim | *Pusan National University*

Sunghwa Son | *Pusan National University*

**ICEEPS-2665****Influence of In-Service Training Experience on Early Childhood Special Education Teacher's Efficacy**

Youngsim Kang | *Pusan National University*

Sunghwa Son | *Pusan National University*

Somi Kim | *Pusan National University*

**ICEEPS-2667****Application of ICF-CY Model to a Preschooler with Cochlear –Implants: A Case Report**

I-Jung Chen | *Chang Gung University*

Ai-Wen Hwang | *Chang Gung University*

Hui-Ju Chen | *Chang Gung University*

**ISSSM-3515**

**A Cross-Disciplinary Study of Metadiscourse Markers in Chinese Academic Research Papers**

Chia-Ling Hsieh | *National Taiwan Normal University*

Xin-Ru Wu | *National Taiwan Normal University*

## ***Poster Session (5)***

---

### **Society (2)**

**Friday, January 20, 2017**

**13:30-14:30**

**Room 101**

---

#### **ICEEPS-2624**

##### **Factors Affecting on BK Metal Sheet Purchasing Decision in Thailand**

Suttikiat Tawichupakhon | *Kasetsart University*

Kullanun Sripongpun | *Kasetsart University*

#### **ICEEPS-2625**

##### **Firm Competency and Service Quality Affecting on Firm Performance: A Case Study of Automobile Repair Business**

Wanee Kongphonsrisiri | *Kasetsart University*

Kullanun Sripongpun | *Kasetsart University*

#### **ICEEPS-2626**

##### **Leadership Characteristics and Motivation Affecting on Organizational Commitment**

Wararak Karun | *Kasetsart University*

Kullanun Sripongpun | *Kasetsart University*

#### **ICEEPS-2627**

##### **The Influence of Leadership and Work Motivation on Work Performance Effectiveness of the Office of the Prosecutor Staffs in the Upper Northeastern Region in Thailand**

Benjaporn Nongkan | *Kasetsart University*

Panitee Karnsomdee | *Kasetsart University*

#### **ICEEPS-2628**

##### **The Influence of Leadership and Work Motivation on Organizational Commitment of the Civil Servants of the Provincial Office for Local Administration in the Upper Northeastern Region in Thailand**

Adisak Karun | *Kasetsart University*

Panitee Karnsomdee | *Kasetsart University*



**ICEEPS-2629****The Influence of Leadership and Organizational Culture on Organizational Commitment of the Northeastern Sugar Industry Staffs in Thailand**

Kantana Saentangjai | *Kasetsart University*

Panitee Karnsomdee | *Kasetsart University*

**ICEEPS-2630****The Influence of Leadership, Quality of Work Life and Organizational Culture on Organizational Commitment of Rajabhat University Staffs in the Northeastern Region of Thailand**

Pawarin Sawasthaisong | *Kasetsart University*

Panitee Karnsomdee | *Kasetsart University*

**ICEEPS-2631****The Effect of Quality of Work Life on Organizational Commitment of Multidisciplinary Working Group Employee: A Case Study of Hospital, Ministry of Public Health, Thailand**

Jarusporn Navanuch | *Kasetsart University*

Watcharapong Intarawong | *Kasetsart University*

Pattama Suriyakulnaayudhya | *Kasetsart University*

**ICEEPS-2632****The Relationship between Product and Service Quality with Customer Retention of Metal Sheet Roof Business**

Narodome Werapurin | *Kasetsart University*

Jitti Kittilertpaisan | *Sakon Nakhon Rajabhat University*

Watcharapong Intarawong | *Kasetsart University*

Pattama Suriyakulnaayudhya | *Kasetsart University*

**ICEEPS-2633****The Effect of Organizational Culture on Administrative Effectiveness through Organization Commitment: Case Study of Town Municipality and City Municipality, Thailand**

Naruamol Namnao | *Kasetsart University*

Watcharapong Intarawong | *Kasetsart University*

Pattama Suriyakulnaayudhya | *Kasetsart University*

#### **ICEEPS-2634**

##### **Organizational Dynamic Capability as Antecedent of Competitive Advantage and Performance of Jasmine Rice Community Enterprise in the Northeastern of Thailand**

Panida Rattanasopa | *Kasetsart University*

Watcharapong Intarawong | *Kasetsart University*

Pattama Suriyakulnaayudhya | *Kasetsart University*

#### **ICEEPS-2636**

##### **The Effect of Motivation and Organization Climate on Service Quality of Municipality in the North Easter of Thailand**

Patcharee Tabsuri | *Kasetsart University*

Jitti Kittilertpaisan | *Sakon Nakhon Rajabhat University*

Watcharapong Intarawong | *Kasetsart University*

Pattama Suriyakulnaayudhya | *Kasetsart University*

#### **ICEEPS-2637**

##### **The Relation between Service Quality and Customer Loyalty of Krung Thai Bank Public Company Limited**

Patcharin Nakovong | *Kasetsart University*

Watcharapong Intarawong | *Kasetsart University*

Pattama Suriyakulnaayudhya | *Kasetsart University*

#### **ICEEPS-2638**

##### **The Investigation Influence of Marketing Mix on Words of Mouth Marketing: A Case Study of Garment Business**

Pitchayarut Noyjaiboon | *Kasetsart University*

Jitpisut Bubphapant | *Kasetsart University*

Watcharapong Intarawong | *Kasetsart University*

Pattama Suriyakulnaayudhya | *Kasetsart University*

#### **ICEEPS-2639**

##### **Factors Affecting the Customer Satisfaction with Mobile Banking Service**

Pimchanok Chomemongkol | *Kasetsart University*

Pattama Suriyakulnaayudhya | *Kasetsart University*

Watcharapong Intarawong | *Kasetsart University*

**ICEEPS-2641****The Influence of Organizational Climate and Transformational Leadership on Employee Motivation of Betagro Group**

Pisut Timthan | *Kasetsart University*

Pattama Suriyakulnaayudhya | *Kasetsart University*

Watcharapong Intarawong | *Kasetsart University*

**ICEEPS-2642****The Relationship between Managerial Skill and Entrepreneurial Orientation of Swine Raisers with Farm Performance Effectiveness**

Thanathat Dechachuchat | *Kasetsart University*

Pattama Suriyakulnaayudhya | *Kasetsart University*

Watcharapong Intarawong | *Kasetsart University*

**ICEEPS-2643****The Consequence of Leadership Style and Good Governance through Organizational Performance of Rajabhat University, Thailand**

Tidarat Ouppachai | *Kasetsart University*

Jitti Kittilertpaisan | *Sakon Nakhon Rajabhat University*

Watcharapong Intarawong | *Kasetsart University*

Pattama Suriyakulnaayudhya | *Kasetsart University*

**ICEEPS-2644****The Effect of Human Resource Practice on Employee Performance by Organizational Commitment as a Mediator of DKSH (Thailand) Company Limited, Thailand**

Vorakorn Khoksunan | *Kasetsart University*

Watcharapong Intarawong | *Kasetsart University*

Pattama Suriyakulnaayudhya | *Kasetsart University*

**ICEEPS-2646****The Influence of Organizational Culture on Organizational Quality Performance through Personnel Job Stress of Rajabhat University, Thailand**

I-Jung Chen | *Chang Gung University*

Kanchariya Suttiwong | *Kasetsart University*

Nattanan Saksamrit | *Kasetsart University*

Pattama Suriyakulnaayudhya | *Kasetsart University*

**ICEEPS-2648**

**The Influence of Organizational Climate on Staff Occupational Stress of the Office of the Auditor General Thailand (OAG)**

Warapron Viputsa | *Kasetsart University*

Nattanan Saksamrit | *Kasetsart University*

Pattama Suriyakulnaayudhya | *Kasetsart University*

**ICEEPS-2649**

**The Relationship between Leader Communication Skill and Employee Engagement of Kasetsart University, Thailand**

Chuwong Klinleka | *Kasetsart University*

**ICEEPS-2681**

**The Influence of Managerial Accounting System Effectiveness on Organizational Performance through Good Governance: A Case Study of Local Government, Thailand**

Kanyarat Datchanthuk | *Kasetsart University*

**ICEEPS-2706**

**Service Marketing Attitudes and Service Quality Affecting on Effectiveness of Internet Banking Services, Netbank, of Krung Thai Bank Public Company Limited (KTB) in Thailand**

Patcharin Buachuma | *Kasetsart University*

Panitee Karnsomdee | *Kasetsart University*

## Poster Session (6)

---

**Mechanical Engineering and Technology / Industrial and  
Manufacturing Technologies / Physics / Environmental  
Engineering / Biological Engineering / Earth Sciences**

**Friday, January 20, 2017**

**15:00-16:00**

**Room 101**

---

**ACENS-67567**

**Analysis for Electro-Mechanical Behavior of a Fixed–Fixed Beam with Thermal Deformation and Undercut Effect**

Wan-Chun Chuang | *National Sun Yat-Sen University*

Chia-Heng Kuo | *National Sun Yat-Sen University*

**ACENS-66796**

**Fabrication Technologies for Flexible Metal Microneedles Array**

Shih-Yu Hung | *Nan Kai University of Technology*

Tsung-Hung Lin | *National Taiwan University of Science and Technology*

Ming-Ho Shen | *Nan Kai University of Technology*

Yu-Ting Hung | *National Yang-Ming University*

**ACENS-67442**

**Development of a Distributed-Compliance Auto-Focusing Voice-Coil Actuator**

George J. Vathakkattil | *National Chung Cheng University*

Yu-Hao Chang | *National Chung Cheng University*

Guangbo Hao | *University College Cork*

Vikram Pakrashi | *University College Dublin*

Chien-Sheng Liu | *National Chung Cheng University*

**ACENS-67457**

**Transient Behavior of a Cantilever Plate Subjected to Impact Loading: Theoretical Analysis and Experimental Measurement**

Chien-Ching Ma | *National Taiwan University*

Chan-Yi Liao | *National Taiwan University*

**ACENS-67555**

**Design of Shell and Tube Heat Exchangers with Considering Pumping Power**

Wongun Yun | *Busan Techno-Park*

Geesoo Lee | *Youngsan University*

Kuisoon Kim | *Pusan National University*

**ACENS-67544**

**The Study of Polynomial Predictor Feedback Compensation System on Hunting Oscillation of the DC Motor**

Yun-Yao Lee | *Chien Hsin University of Science and Technology*

Po-Hong Lu | *Chien Hsin University of Science and Technology*

Yi-Rui Lai | *Chien Hsin University of Science and Technology*

**ACENS-67522**

**PEDOT: PSS Thin Film Coating Using Nozzle Printing with Various Ethanol Dilution Rates**

Mingyu Kang | *Korea Institute of Industrial Technology*

Jung Hyuk Im | *Korea Institute of Industrial Technology*

Sang-Ho Lee | *Korea Institute of Industrial Technology*

Kwan Hyun Cho | *Korea Institute of Industrial Technology*

Kyungtae Kang | *Korea Institute of Industrial Technology*

**ICAS-335**

**Fault-Tree Analysis of dc-to-dc Step-Down Converter**

Suk Kun Bae | *Hanbat National University*

Feel-Soon Kang | *Hanbat National University*

**ACENS-67608**

**Validation from Measurements of Silicon Sensor Specifications**

H. Park | *Kyungpook National University*

H.B. Jeon | *Kyungpook National University*

K.H. Kang | *Kyungpook National University*

S.C. Lee | *Kyungpook National University*

**ACENS-67644**

**Development of New Bright Elpasolite Crystal Scintillators**

Hong Joo Kim | *Kyungpook National University*

Jong Hoon Jang | *Kyungpook National University*

Gul Rooh | *Abdul Wali Khan University*

Sunghwan Kim | *Cheongju University*

**ACENS-66793**

**Fabrication of ZnO-Doped CeO<sub>2</sub> Dielectric Thin Films by Sol-Gel Method**

Ching-Fang Tseng | *National United University*

Cheng-Hsing Hsu | *National United University*

Wen-Yu Hsu | *National United University*

**ACENS-67528**

**Improved Photocatalytic Activity of Fe-g-C<sub>3</sub>N<sub>4</sub>-ZnO Nanocomposites for Degradation of VOCs**

Migyeong Kim | *Kyungpook National University*

Dongjin Kim | *Kyungpook National University*

Yeonji Jin | *Kyungpook National University*

Heejin Yoo | *Kyungpook National University*

Yeonggyeong Kim | *Kyungpook National University*

Wan-Kuen Jo | *Kyungpook National University*

**ACENS-67529**

**Nickel-Deposited CdS/ZnO Nanostructures for Photocatalytic Hydrogen Evolution**

Yeong-Gyeong Kim | *Kyungpook National University*

Yeon-Ji Jin | *Kyungpook National University*

Hee-Jin Yoo | *Kyungpook National University*

Dong-Jin Kim | *Kyungpook National University*

Mi-Gyeong Kim | *Kyungpook National University*

Seung-Ho Shin | *Daegu Health College*

Wan-Kuen Jo | *Kyungpook National University*

**ACENS-67570**

**Examination of Bioaerosols in Different Type Teaching Spaces**

Wei-Kuang Wang | *Feng Chia University*

Hsin-Yu Chang | *Feng Chia University*

Ting-I Yang | *Feng Chia University*

**ACENS-66805**

**The Assessment of Eco-Industrial Parks in Thailand Using VIKOR Method**

Natapat Areerakulkan | *Dhurakij Pundit University*

Somying Ngarnpornprasert | *Dhurakij Pundit University*

**ACENS-67573**

**A New Microfluidic High-Throughput Cell Analyzer**

Horn-Jiunn Sheen | *National Taiwan University*

Kuang-Chong Wu | *National Taiwan University*

Yen-Ling Weng | *National Taiwan University*

Yu-Jui Fan | *National Taiwan University*

**ACENS-67966**

**Feasibility Study on the Production of Prodigiosin by a Novel Strategy in *Serratia marcescens* Strain**

Yu-Hong Wei | *Yuan Ze University*

Wei-Chuan Chen | *Yuan Ze University*

**ACENS-67967**

**A Enhanced Algorithm for Automatic Sleep Scaling Based Hilbert Huang Transform**

Jia-Rong Yeh | *National Central University*

**ACENS-67998**

**Characterization of NiCuOx Photocatalyst Thin Film Prepared by DC Magnetron Sputtering Technology for Hydrogen Production**

Yi-Hao Pai | *National Dong Hwa University*

Xing-Han Huang | *National Dong Hwa University*

**ACENS-67500**

**Mechanical Properties of Non-Cement Matrix According to Replacement Ratio of Dyeing Sludge**

Sang-Soo Lee | *Hanbat National University*

Tae-Hyun Kim | *Hanbat National University*

**ACENS-67451**

**Volcanoes with Highest Hazard Probability around the Korean Peninsula**

Eun-Kyeong Choi | *GI Co. Ltd.*

Sung-Wook Kim | *GI Co. Ltd.*

Jun-Yeol Cho | *GI Co. Ltd.*



**ACENS- 68937**

**The Reproductive Cycle of the Humbug Damselfish *Dascyllus aruanus* in Micronesia  
According to the Changes in Lunar Phase**

Cheol Young Choi | *Korea Maritime and Ocean University*

Ji Yong Choi | *Korea Maritime and Ocean University*

## Poster Session (7)

---

**Biomedical Technologies / Biotechnology / Biology / Civil  
Engineering / Transportation / Aeronautics & Aerospace  
Engineering**

**Saturday, January 21, 2017      09:30-10:30      Room 101**

---

### ICAS-297

**Computer Modeling and Discovery of Novel Cyclophilin A Inhibitors for the Treatment of Hepatitis C Virus Infections**

Won-Jea Cho | *Chonnam National University*

### ICAS-274

**Discrimination of Umami Tastants Using Floating Electrode-Based Bioelectronic Tongue Mimicking Insect Taste Systems**

Je Won Jung | *Incheon National University*

Hyung-Yeon Park | *Incheon National University*

Gwang Rae Noh | *Incheon National University*

Dong In Kim | *Incheon National University*

Hyung Wook Kwon | *Incheon National University*

### ACENS-67455

**Bone Marrow-Derived Mesenchymal Stem Cells Contribute to the Cancer Stem Cell Niche and Promote Tumor Metastasis**

Yi-Wen Chang | *National Tsing Hua University*

Ko-Chuan Lee | *National Tsing Hua University*

Wei-Hsin Lin | *National Tsing Hua University*

Che Lin | *National Tsing Hua University*

Jia-Lin Lee | *National Tsing Hua University*

### ACENS-67634

**Fungicidal Activity of Some Crude Extracts of Medicinal Plants against *Colletotrichum acutatum*, the Pathogen of Anthracnose Disease in Chilli**

Sawatdikarn Sanit | *Phranakhon Si Ayutthaya Rajabhat University*

**ACENS-66804**

**Modulation of Bacterial and Fungal Populations in Rats Fed Prebiotic Oat Beta-Glucan**

Kocas K.L. Lam | *The Chinese University of Hong Kong*

Peter C.K. Cheung | *The Chinese University of Hong Kong*

**ACENS-67443**

**Antiproliferation and Antioxidation Activities of *Eucalyptus tereticornis* Leaves**

Thanavadee Kor Arnan | *King Mongkut's Institute Technology of Ladkrabang*

Yaowaporn Phoothongkham | *King Mongkut's Institute Technology of Ladkrabang*

Eakalak Phanchamnan | *King Mongkut's Institute Technology of Ladkrabang*

**ACENS-67618**

**Cox Regression within a Hospital Cluster Models to Explore the Risk of Asthma in Croup Childhood**

Hui-Wen Lin | *Soochow University*

Sheng-Chieh Lin | *Soochow University*

**ACENS-68941**

**Mapping of Regulating Grain-Shattering Gene Using Cheongcheong/Nagdong Doubled Haploid Population in Rice**

Gyu-Ho Lee | *Kyungpook National University*

Kyung-Min Kim | *Kyungpook National University*

**ACENS-68880**

**The Antiviral Activities of *Lactobacillus Reuteri* Pg4 and Chinese Herbal Medicines**

T. H. Rau | *National Taiwan University*

J. R. Liu | *National Taiwan University*

**ACENS-66758**

**Mechanism on Chloride Adsorption of Cement Hydrates**

In-Seok Yoon | *Induk University*

Tatsuhiko Saeki | *Niigata University*

**ACENS-67519**

**Heat Transfer Properties of High Porous Feldspar Mortar**

Sung Wook Kim | *GI Co. Ltd.*

Dae Hong Go | *GI Co. Ltd.*

Jin Hyeok Lee | *GI Co. Ltd.*

Eun Kyeong Choi | *GI Co. Ltd.*

**ACENS-67520**

**An Experimental Study on the Hydraulic Conductivity Change of Light-Weight Foamed Zeolite According to the Mixing Ratio**

Sung Wook Kim | *GI Co. Ltd.*

Dae Hong Go | *GI Co. Ltd.*

Jin Hyeok Lee | *GI Co. Ltd.*

Eun Kyeong Choi | *GI Co. Ltd.*

**ACENS-67453**

**An Empirical Study of the User Satisfaction for Taichung's BRT**

Chung-Wei Kuo | *Aletheia University*

Rong-Chang Jou | *National Chi Nan University*

**ACENS-67480**

**Efficiency of Shore Protection by the Different Type Submerged Breakwaters**

Wen-Juinn Chen | *National Chiayi University*

Ching-Ton Kuo | *National Chengkung University*

Hon-Wei | *The Seventh River Management Office, WRA*

**ACENS-68918**

**Inspection of Concrete Deterioration Using Active Infrared Thermography Considering the Influence of Environmental Conditions**

Quang Huy Tran | *Chonnam National University*

Jungwon Huh | *Chonnam National University*

DongYeob Han | *Chonnam National University*

Jin-Hee Ahn | *Gyeongnam National University of Science & Technology*

**ACENS-68920**

**Probabilistic Risk Assessment of Mono-Pile Foundation for the Offshore Wind Turbine**

Trung Chien Le | *Chonnam National University*

Jungwon Huh | *Chonnam National University*

Jong-In Lee | *Chonnam National University*

Jae-Hyun Park | *Korea Institute of Civil Engineering and Building Technology*

Kiseok Kwak | *Korea Institute of Civil Engineering and Building Technology*

**ICAS-244**

**A new Phase Shift Full Bridge Low Voltage DC/DC Converter with a Low Voltage Stressed Current Double Rectifier for Electric Vehicles**

Kang Hyun Yi | *Daegu University*

**ACENS-66801**

**Optical Design of Satellite Camera for Lens Shifting Image Stabilization**

Jun-Mo Tak | *Korea Aerospace University*

Jai-Hyuk Hwang | *Korea Aerospace University*

**ACENS-67504**

**Analysis of Microplasma Discharge and Development of Flexible Microplasma Thruster for Future Nano-Satellite Electric Propulsion System**

Heaseok Seo | *Kyungpook National University*

Dong Ha Kim | *Kyungpook National University*

Jun-Goo Shin | *Kyungpook National University*

Daesub Kum | *Kyungpook National University*

Won Hyun Kim | *Kyungpook National University*

Bhum Jae Shin | *Sejong University*

Heung-Sik Tae | *Kyungpook National University*

Choon-Sang Park | *Kyungpook National University*

## Poster Session (8)

---

**Psychology / Communication / Chemistry / Chemical**

**Engineering**

**Saturday, January 21, 2017**

**11:00-12:00**

**Room 101**

---

**ISSSM-3415**

**The Application of Mindfulness-Based Cognitive Therapy to Reduce Senior High Students' Interpersonal Anxiety**

Ya-Yu Cheng | *National Chunghua University of Education*

Tsung-Chain Hunag | *National Chunghua University of Education*

**ISSSM-3592**

**Neural Substrates Associated with Inhibitory Regulation in Individuals with Excessive Sexual Behavior**

Young-Ji Eum | *Chungnam National University*

Ji-Woo Seok | *Korea Basic Science Institute*

Jin-Hun Sohn | *Chungnam National University*

**ICEEPS-2561**

**The Effect of Cognitive-Based Training for the Healthy Elderly**

Kuei-Ru Chou | *Taipei Medical University*

**ICEEPS-2588**

**Is the Life-Long Learning Related to the Quality of Life for Elderly Learners?**

Jia-Mi Chen | *National Taitung University*

**ICEEPS-2600**

**A Study Protocol of Investigating the Differences between Children Born Late-Preterm and Full Term on Attention Regulation of Parent-Child Interaction and Mastery**

**Motivation**

Heng-Wen Lin | *Chang Gung University*

Ai-Wen Hwang | *Chang Gung University*

### **ICEEPS-2602**

#### **Factors Affecting Research Motivation of Faculties of National University Corporation in Japan**

Shigeki Katsura | *Shokei Gakuin University*

Yoshikatsu Tamura | *Shokei Gakuin University*

Takeyasu Kawabata | *Shokei Gakuin University*

Yoshiko Koizumi | *Shokei Gakuin University*

Xiao Ping Li | *Dalian University of Technology*

Chong Wang | *Dalian University of Technology*

### **ICEEPS-2658**

#### **Differences on Direct Forgetting of Emotional Expression in Face**

Songhee Kim | *Chungnam National University*

Haeyoung Bang | *Chungnam National University*

Jinseon Kwak | *Chungnam National University*

Yuxi Jing | *Chungnam National University*

Yunman Kim | *Chungnam National University*

Youngrae Kim | *Chungnam National University*

Goeun Lee | *Chungnam National University*

Youngchang Lee | *Chungnam National University*

Gunhwan Han | *Chungnam National University*

Yoonki Min | *Chungnam National University*

### **ICEEPS-2692**

#### **A Protocol of Investigating Executive Functions: Effects on Response Inhibition between Late-Preterm and Full-Term Preschoolers**

Ya-Jiun Wu | *Chang Gung University*

Ai-Wen Hwang | *Chang Gung University*

### **ICEEPS-2713**

#### **Project Development and Appraisal of the Group Therapy Adopted the Board Game Play for the Children and Adolescents with Externalizing Behaviors**

Yu-Kuang Kevin Hsu | *National Tsing-Hua University*

### **ISSSM-3432**

#### **Message Type and the Emergence of Leadership**

Ezgi Ulusoy | *Ewha Womans University*

Hye Eun Lee | *Ewha Womans University*

Steven J. Moody | *Brigham Young University*

**ISSSM-3394**

**"True or Not True, Is that a Question?" A Pilot Study on the Perceived Truthfulness of Animated News**

Chin-Chih Chiang | *National ChengChi University*

**ISSSM-3449**

**The Change of Internet News Narrative in the Cross-Media Age: The Plot as an Observation Unit**

Ya-Hui Chen | *Fu Jen Catholic University*

**ACENS-67630**

**Density Functional Theoretical Study on the Hydrogen-Bonding Patterns of N7-Methylguanidine**

Sungu Hwang | *Pusan National University*

**ACENS-67647**

**Efficient Synthesis of Porphyrin in the Acidic Ionic Liquids**

Satoshi Kitaoka | *Kindai University*

Akihiro Yamamoto | *Kindai University*

Tetsuro Hori | *Kindai University*

Kaoru Nobuoka | *Oita University*

**ACENS-67600**

**Preparation of Biodegradable Chitosan/Gelatin Blend Films for Controlled Release of Antimicrobial Drugs**

Yaowalak Srisuwan | *Maharakham University*

Prasong Srihanam | *Maharakham University*

Nuanchai Kotsaeng | *Kalasin University, Somdech Campus*

**ACENS-67594**

**Preparation and Characterization of Silk Fibroin/Alginate Blend Scaffolds**

Ansaya Thonpho | *Maharakham University*

Prasong Srihanam | *Maharakham University*

**ACENS-67631**

**Enhancement of Photocatalytic Activity of Calcium Hydroxide Photocatalyst by Silver Doping for Methylene Blue Dye Photocatalytic Degradation**

Elham Shafik Aazam | *King Abdulaziz University*



**ACENS-67513**

**Boosting Catalytic Activity of Metal Nanoparticles for 4-Nitrophenol Reduction:  
Modification of Metal Nanoparticles with Poly (diallyldimethylammonium chloride)**

Jyun-Guo You | *National Sun Yat-Sen University*

Wei-Lung Tseng | *National Sun Yat-Sen University*

**ACENS-67958**

**Donor-acceptor Type Conjugated Copolymers Based 6-(2-thienyl)-4H-thieno[3,2-b]indole  
and Fluorinated Benzothiadiazole for Organic Solar Cells**

Juntae Yun | *Pusan National University*

Juae Kim | *Pusan National University*

Minji Kim | *Pusan National University*

Dasom Gu | *Pusan National University*

Hongsuk Suh | *Pusan National University*

**ACENS-67493**

**Fractionation and Evaluation of Phytochemicals and Antioxidant Capacity from Red  
Grape (*Vitis vinifera*) Seed Extract**

Chuleerat Wongnarat | *Maharakham University*

Prasong Srihanam | *Maharakham University*

**ACENS-66760**

**Effect of Surface Modification of CaCO<sub>3</sub> Nanoparticles by Silane Coupling Agent on  
Stability of Foam and Emulsion**

Ju Yeon Lee | *Dongguk University*

Su Min Lee | *Dongguk University*

InHo Yoon | *Korea Atomic Energy Research Institute*

ChongHun Jung | *Korea Atomic Energy Research Institute*

JongChoo Lim | *Dongguk University*

**ACENS-67623**

**Development of Novel Nanoaggregates by Means of One Vitamin B Derivative**

Tzung-Han Chou | *National Yunlin University of Science and Technology*

Pei-Wen Liao | *National Yunlin University of Science and Technology*

Ching-Tzu Hsu | *National Yunlin University of Science and Technology*

Chia-Hua Liang | *Chia Nan University of Pharmacy and Science*

**ACENS-67990**

**Study of Quantitative Analysis Method for Clay Minerals by X-Ray Diffractometry**

Miki Kasari | *Meiji University*

Daisuke Fukuda | *Meiji University*

Atsushi Ohbuchi | *Rigaku Corporation*

Yuya Koike | *Meiji University*

**ACENS-67646**

**Multi-Phase Gas Hydrates Enclathrating Large Organic Guest Molecules**

Heejoong Kim | *Gwangju Institute of Science and Technology (GIST)*

Seokyeon Moon | *Gwangju Institute of Science and Technology (GIST)*

Youngjune Park | *Gwangju Institute of Science and Technology (GIST)*

**ACENS-68871**

**Sequential Extraction of <sup>137</sup>Cs in Environmental Materials**

Kengo Fujii | *Meiji University*

Kenta Hagiwara | *Meiji University*

Atsushi Ohbuchi | *Rigaku Corporation*

Yuya Koike | *Meiji University*

**ACENS-68949**

**Development of Hybrid Extraction-Distillation Processes for Separation of Biomass Derivatives**

Le Cao Nhien | *Yeungnam University*

Nguyen Van Duc Long | *Yeungnam University*

Sangyong Kim | *Korea Institute of Industrial Technology*

Moonyong Lee | *Yeungnam University*

**ACENS-67999**

**Addition of Graphene and Carbon Nano Tube to Li<sub>4</sub>Ti<sub>5</sub>O<sub>12</sub> Anode Material for Lithium-ion Batteries**

Byung-Ki Na | *Chungbuk National University*

**ACENS-67523**

**Solubility Change of Hole Transfer Materials Depending on Annealing Temperature**

Mingyu Kang | *Korea Institute of Industrial Technology*

Jung Hyuk Im | *Korea Institute of Industrial Technology*

Sang-Ho Lee | *Korea Institute of Industrial Technology*

Kwan Hyun Cho | *Korea Institute of Industrial Technology*

Kyungtae Kang | *Korea Institute of Industrial Technology*

## Poster Session (9)

---

**Electrical and Electronic Engineering (2) / Electronics /  
Radiation Protection and Dosimetry / Power & Energy  
Engineering / Materials Science and Engineering (2)**

**Saturday, January 21, 2017      13:00-14:00      Room 101**

---

### **ACENS-66817**

#### **Arbitrary Length Equal Output Power Branch Line Design**

Yong-Han Jiang | *National Chin Yi University of Technology*

Chien-Chun Ku | *National Chin Yi University of Technology*

Hong-Pu Lin | *National Chin Yi University of Technology*

Jan-Dong Tseng | *National Chin Yi University of Technology*

Wen-Te Wang | *National Chin Yi University of Technology*

### **ACENS-66818**

#### **Microstrip in-Line Three-Line Band Rejection Structure**

Hong-Pu Lin | *National Chin Yi University of Technology*

Yong-Han Jiang | *National Chin Yi University of Technology*

Chien-Chun Kua | *National Chin Yi University of Technology*

Jan-Dong Tseng | *National Chin Yi University of Technology*

Bo-Ting Lai | *National Chin Yi University of Technology*

### **ACENS-67491**

#### **A Multi-Function Assistive Input System for the Patients with Limb Disorders**

Chung-Min Wu | *Kun Shan University*

Shih-Chung Chen | *Southern Taiwan University of Science and Technology*

Shu-Han Hsu | *Shi-Shih Elementary School*

Yeou-Jiunn Chen | *Southern Taiwan University of Science and Technology*

**ACENS-67566**

**The BCI Design for Boshiamy Chinese Text Input Method**

Shih-Chung Chen | *Southern Taiwan University of Science and Technology*

Chung-Min Wu | *Kun Shan University*

Yeou-Jiunn Chen | *Southern Taiwan University of Science and Technology*

Xuan-Jia Kuo | *Southern Taiwan University of Science and Technology*

**ACENS-67485**

**Recognition and Tracking of a Disabled Person by Using an UAV**

Metin Alican | *Southern Taiwan University of Science and Technology*

Ming-Yuan Shieh | *Southern Taiwan University of Science and Technology*

**ACENS-66727**

**Design of Shunt Active Power Filter Based on Adaptive Linear Filtering and Frequency Detection Method**

Cheng-I Chen | *National Central University*

Chen-Lin Hsu | *National Central University*

Yeong-Chin Chen | *Asia University*

**ACENS-67963**

**Using Fingerprint Recognition and 3G Communication Technology to Build a Remote Check-in System**

Horng-Lin Shieh | *St. John's University*

Cheng-Chien Kuo | *National Taiwan University of Science and Technology*

Sheng-Bo Gao | *St. John's University*

Cheng-Yu Yang | *St. John's University*

Ming-Syuan Lu | *St. John's University*

**ACENS-67960**

**A 50-ps FPGA-Based TDC for Digital PET Applications**

Yuan-Ho Chen | *Chang Gung University*

**ICAS-279**

**Dose Survey and Risk Assessment for the Uses of Handheld X-Ray Equipment**

Fang-Yuh Hsu | *National Tsing Hua University*

Jiunn-Hsing Chao | *National Tsing Hua University*

**ACENS-67540**

**Enhanced the Electrochemical Performance of Electrolyte and Electrode at High Working Voltage for EDLCs**

Soo-Gil Park | *Chungbuk National University*

**ACENS-66814**

**Precise Detection of Boric Acid Concentration Using Novel Coulombic Titration Method**

Ki Ryong Mang | *Gachon University*

Doo Soo Kim | *Gachon University*

Il Tae Kim | *Gachon University*

Jaehyun Hur | *Gachon University*

Chung Wung Bark | *Gachon University*

Ji Hyeon Kim | *Gachon University*

Sang Joon Park | *Gachon University*

**ACENS-68896**

**Advanced Droop Control Method with Improved Reactive Power Sharing Performance in Parallel Distributed Generation Inverters**

Nguyen Tien Hai | *Seoul National University of Science and Technology*

Kyeong-Hwa Kim | *Seoul National University of Science and Technology*

**ACENS-68957**

**Analysis of Shape and Composition of Carbon Black Recovered from Carbonized Waste Tire**

Sang-Min Lee | *Kumoh National Institute of Technology*

Dong-Su Kang | *Kumoh National Institute of Technology*

Won-Pyo Jang | *Kumoh National Institute of Technology*

Sang-Hye Lee | *Kumoh National Institute of Technology*

Jea-Seung Roh | *Kumoh National Institute of Technology*

**ACENS-67511**

**Analysis of Rate of Carbon Black Oxidation Depending on Oxidation Temperature and Time**

Jae-Ho Lee | *Kumoh National Institute of Technology*

Dong-Su Kang | *Kumoh National Institute of Technology*

Sang-Min Lee | *Kumoh National Institute of Technology*

Un-Gyeong Baek | *Kumoh National Institute of Technology*

Won-Pyo Jang | *Kumoh National Institute of Technology*

Suk-Hwan Kim | *Kumoh National Institute of Technology*

Jea-Seung Roh | *Kumoh National Institute of Technology*

**ACENS-67643**

**Recyclable Adsorbents with Thioureido Group and Amino Group Synthesized by Modifying Magnetite**

Hua-Wei Chen | *National Ilan University*

Gui-Bing Hong | *National Taipei University of Technology*

Chyow-San Chiou | *National Ilan University*

**ICAS-317**

**Enhanced Performance Using Sol-Gel Processed ZnO Film with Low Annealing Temperature as Electron Transporting Layer in Inverted Solar Cells**

Chun-Chiao Lin | *National Sun Yat-sen University*

Chih-Kuo Huang | *National Sun Yat-sen University*

Mei-Ying Chang | *National Sun Yat-sen University*